



2/1 Queen St Queenscliff VIC

3 2 1

In a peaceful pocket of the ever popular seaside township of Queenscliff, and with serene views out to Swan Bay, this immaculate townhouse offers low maintenance living on a grand scale. Take a walk or ride into town, or explore the magnificent Bellarine Rail Trail as it winds along the water, rolling farmlands and wineries - whatever you choose, it's all within reach from here!

- Positioned well back off the street, and elevated for bay and parkland views
- Classic 2 storey weatherboard construction, with low maintenance external gardens
- Downstairs, the large family room overlooks the peaceful courtyard alfresco
- 2 well appointed bedrooms, both with generous BIRs share a family bathroom and separate WC
- Upstairs, the main living is complemented by an outdoor balcony space, and impressive water vista
- Watch the sun rise over Swan Bay in the mornings, an ever changing backdrop rich with birdlife!
- Hear the distant boats in the harbour, and the occasional passing steam trains on the tourist rail
- Inside, the living and dining space is comfortably laid out

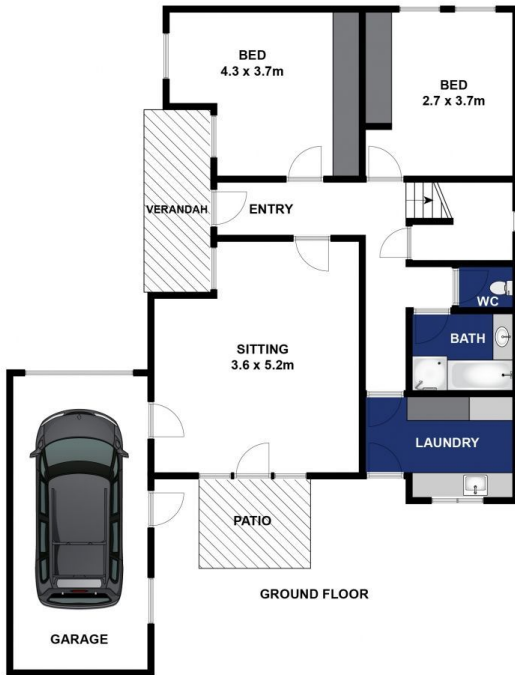
Price : \$ 650,000
Land Size : 243 sqm
View : <https://www.bellarineproperty.com.au/4065277>



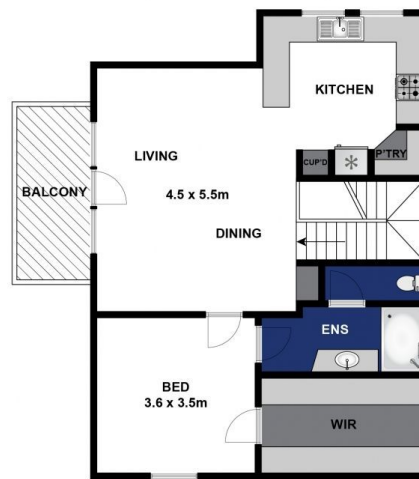
Lee Martin
03 5297 3888



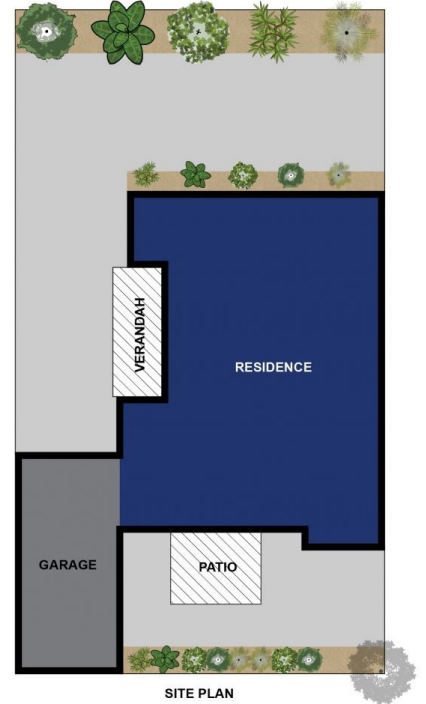
Levi Turner
03 5254 3100



GROUND FLOOR



FIRST FLOOR



SITE PLAN

Approx. Area 150m²

Whilst bwrn.com.au has made every attempt to ensure the accuracy of the floor plan contained here, measurements are approximate and no responsibility is taken for any error, omission, or mis-statement. This plan is for illustrative purposes only.

2/1 Queen Street, Queenscliff

bellarineproperty