



86 Sheepwash Road Barwon Heads VIC

3 2 1

This home's calm, river-end placement is so relaxing! Nestled by graceful gums, the indoor living zones extend to a sunny north facing deck creating the ideal atmosphere for coastal inspired indoor-outdoor living. This quiet location is unaffected by summer tourism, and is linked via safe trails to the Village Park, school, shops and the beach. Young families, downsizers or holiday investors should inspect ASAP.

- The 3 bedroom design has a contemporary feel and fresh upgrades throughout
- The open plan floorplan incorporates spacious kitchen, living and dining areas
- Living and dining with seamless connection to shaded and covered sections of the deck
- Living sits under an impressive vaulted ceiling with log fireplace and split system A/C
- Dining proportioned for dinner parties with private views over the front garden
- Spotless kitchen with great storage, electric oven, instant heat cooktop and dishwasher
- Bedrooms and wet areas bud off a central hall towards the rear

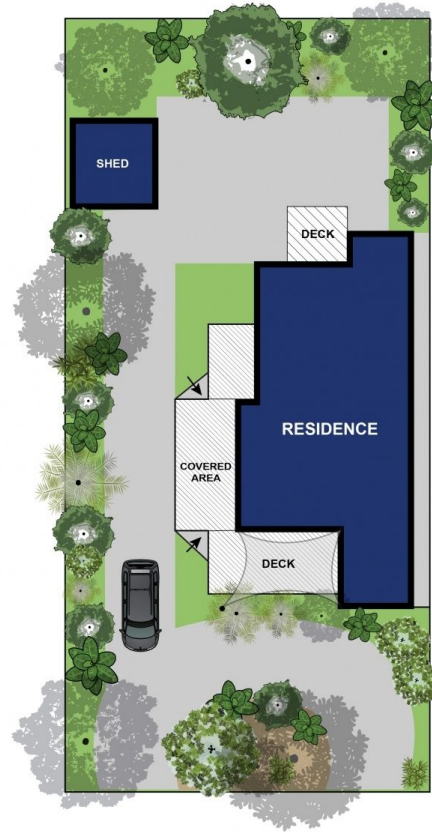
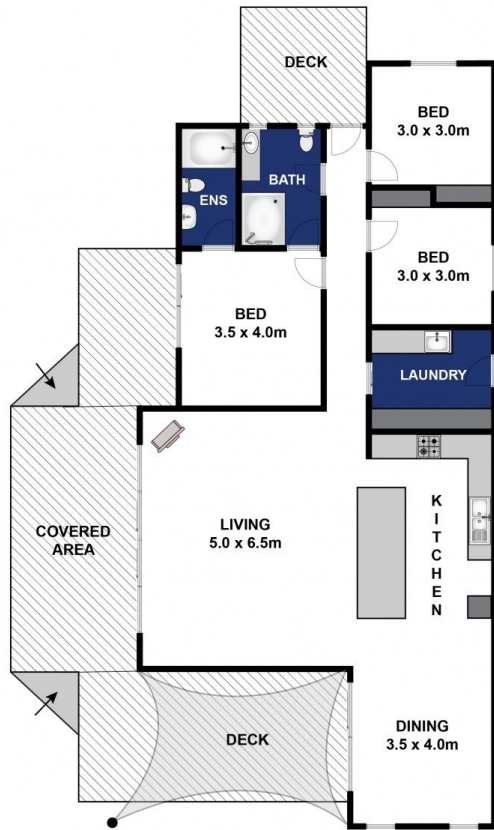
Price : \$ 860,000
Land Size : 749 sqm
View : <https://www.bellarineproperty.com.au/3999174>



Levi Turner
03 5254 3100



Peta Walter
03 5254 3100



Whilst bwrn.com.au has made every attempt to ensure the accuracy of the floor plan contained here, measurements are approximate and no responsibility is taken for any error, omission, or mis-statement. This plan is for illustrative purposes only.

86 Sheepash Road, Barwon Heads

bellarineproperty