



255 Swan Bay Road Wallington VIC

4 2 6

EXPRESSIONS OF INTEREST CLOSING FRIDAY 15TH DECEMBER @ 5PM (UNLESS SOLD PRIOR)

Five picturesque acres of prime Wallington land with a timeless brick homestead nestled perfectly within. The endless rural vistas are integral to the private and tranquil lifestyle offered. You'll love the privilege of space, potential for hobby farm and equine pursuits, and the rewards of organic self-sufficiency. Quality renovations include new kitchen, en suite and main bathroom, as well as the addition of solid Spotted Gum floors.

- A meandering driveway lined with established Silver Birch trees, creates a stunning first impression
- Gardens and lawn nestle the patios that run the length of the north and south elevations
- The home is welcoming, brimming with contemporary country charm
- Indoors, a home office buds directly off the entry, private - yet still connected to the main hub
- In the living hub, north and south windows frame nestling garden and countryside views
- The bay window and built-in wood fireplace are highlights

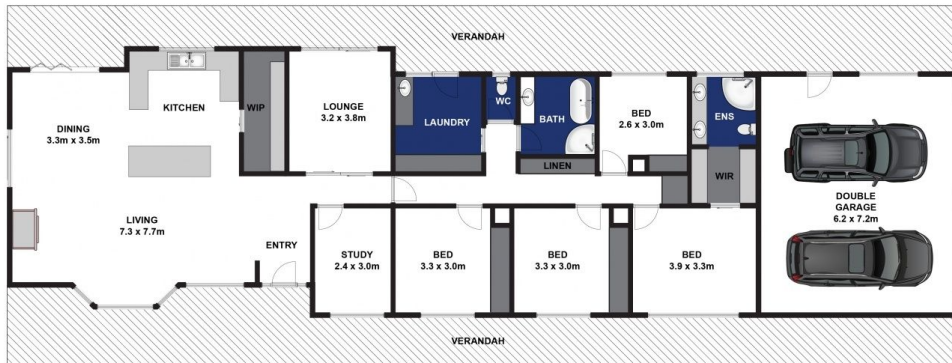
Price : \$ 1,225,000
Land Size : 5 Acres
View : <https://www.bellarineproperty.com.au/39692>
 29



Toby Lee
 03 5254 3100



Dan Halsey
 03 5254 3100



Whilst bwrn.com.au has made every attempt to ensure the accuracy of the floor plan contained here, measurements are approximate and no responsibility is taken for any error, omission, or mis-statement. This plan is for illustrative purposes only.

255 Swan Bay Road, Wallington