



9 Cottesloe Drive Barwon Heads VIC

6 3 2

Completely contemporary combining the cleanest, simplest lines while introducing sleek ceiling angles, top-of-the-line appliances and fittings, and a subtle colour palette with shades of white contrasted by the brilliant hues of natural timber - across floors, decks and doors. The result is a home that put simply- you will want to live in!

Price : \$ 1,350,000
Land Size : 585 sqm
View : <https://www.bellarineproperty.com.au/39570>
 51

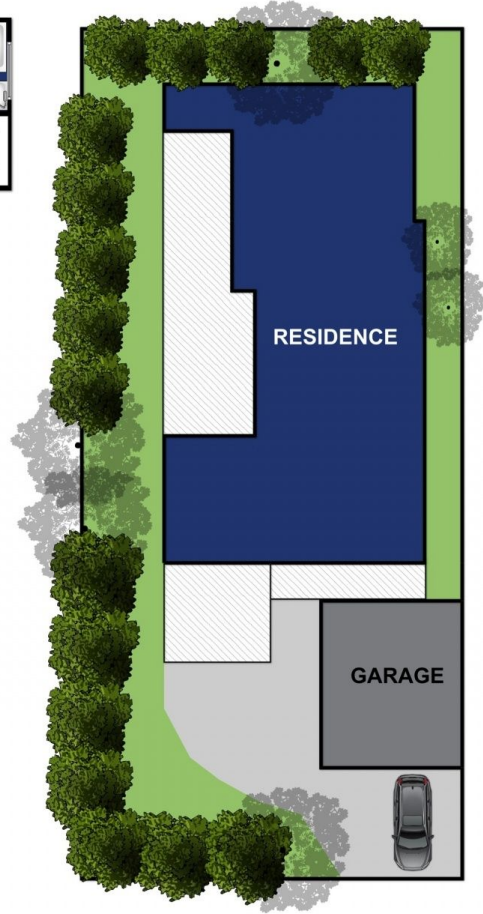
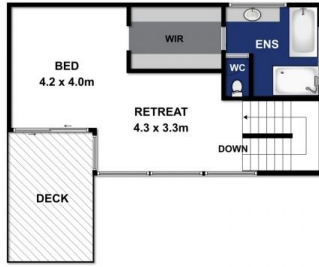
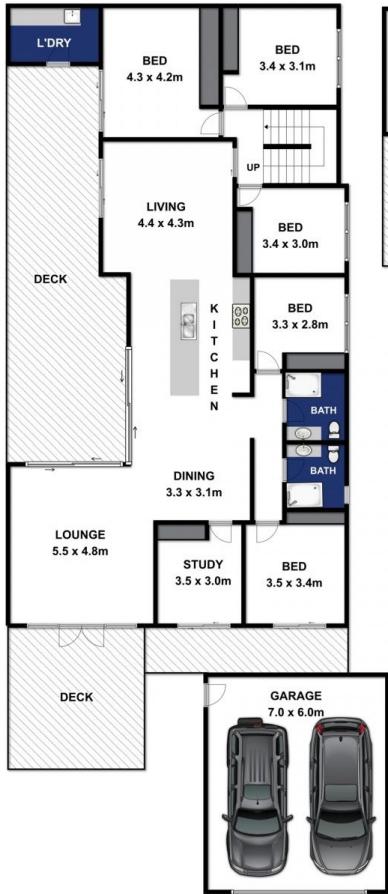
- Behind high brush fence the opening gate leads to front garden with giant Moonah tree and sleeper steps to the home
- Impressive covered entrance deck with double glass doors are inviting to the welcoming lounge or potential dining space
- Fabulous polished spotted gum timber flooring flows through to the kitchen and beyond
- Study/den/office with north-facing window to the outside deck
- On the lower level are 5 well placed bedrooms; 2 in a private wing, with 2 bathrooms - each with shower, vanity and WC, and a further 3 at the rear- one with a slider to the deck
- Brilliant open-plan kitchen/lounge with ceiling variations including exposed beams and gable



Levi Turner
 03 5254 3100



Peta Walter
 03 5254 3100



Whilst bwrn.com.au has made every attempt to ensure the accuracy of the floor plan contained here, measurements are approximate and no responsibility is taken for any error, omission, or mis-statement. This plan is for illustrative purposes only.



9 COTTESLOE DRIVE, BARWON HEADS

bellarineproperty