



## 18-24 High Ridge Drive Clifton Springs VIC

4 2 10

Set in a quiet lifestyle location renowned for its jaw-dropping bay views this magical property is a must see. Comprising approximately 4.23 acres, the most unique asset is the privilege of space. Nestled by picturesque gardens and lawns, the solid mud brick home and large machinery shed, boast panoramic views over Port Phillip Bay and the You Yangs. The potential here is extraordinary!

- Heart of the Bellarine, moments from conveniences in Drysdale, 25' to Geelong, 90' to Melbourne
- Stunning bay views include passing ships by day and Geelong City lights by night
- Approximately 5' walk to protected bayside beaches and parkland
- Earthy characterful home custom built from mud brick and cedar flitches
- Quirky mezzanine design with vast kitchen/living hub below and a parental retreat above
- Also a bright garden room and DLUG with 2 lofty double bedrooms above the garage
- Impressive north facing kitchen/living hub with French windows framing bay and garden views

**Price** : \$ 1,340,000  
**Land Size** : 4.23 Acres  
**View** : <https://www.bellarineproperty.com.au/3955557>

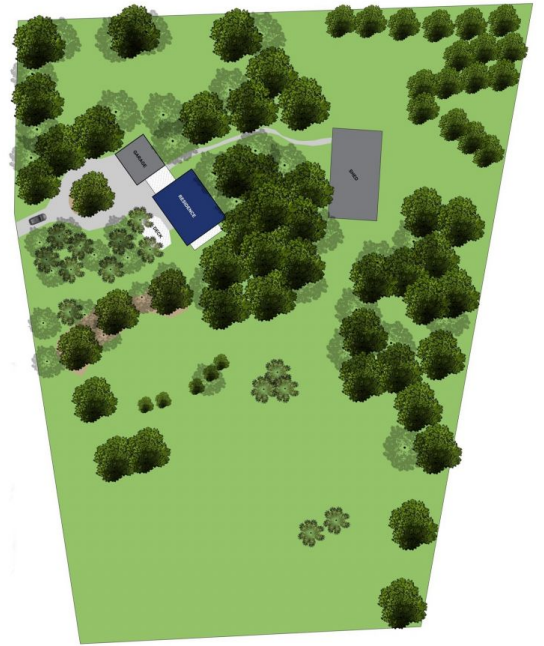
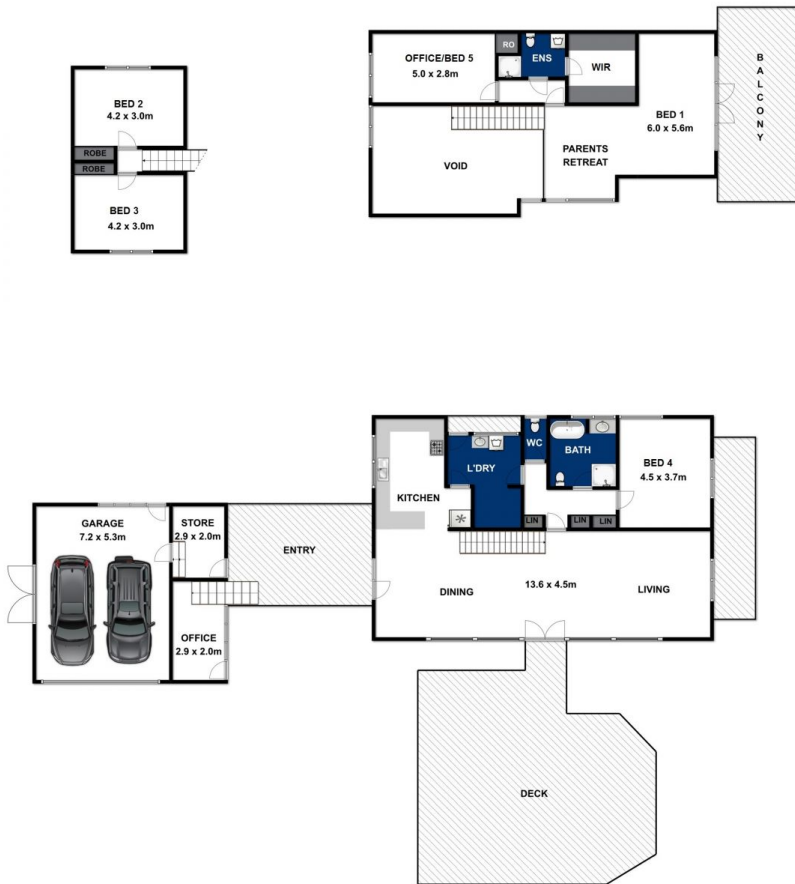


**Lee Martin**  
03 5297 3888



**Levi Turner**  
03 5254 3100





Whilst [bwrn.com.au](http://bwrn.com.au) has made every attempt to ensure the accuracy of the floor plan contained here, measurements are approximate and no responsibility is taken for any error, omission, or mis-statement. This plan is for illustrative purposes only.



## 18-24 HIGH RIDGE DRIVE, CLIFTON SPRINGS

bellarineproperty