



88 Hitchcock Avenue Barwon Heads VIC

4 1 1

Expressions of Interest Closing Wednesday 15th November @ 5pm

With the Barwon Heads village currently landlocked, opportunities such as these are a rare and priceless acquisition. Reminiscent of the relocated fishing shacks occupying multi-generational families looking for a sea change, this classic weatherboard beach cottage stands proudly; knowing it still holds one of the best seats in the house.

- Around a minute stroll to the cafe culture of Barwon Heads, all practical amenities and the Barwon River
- Endearing weatherboard beach shack set on a large 779m2 (approx) allotment in the absolute village centre
- Baltic pine floorboards, heightened ceilings and timber lining, pay homage to an alternate era
- This patchwork of coastal character boasts a homely ambience unique to the heart of town
- The existing home has a workable footprint with 4-bedrooms, family bathroom and timber kitchen
- Asko dishwasher, 900mm freestanding oven and timber cabinetry are welcomed upgrades

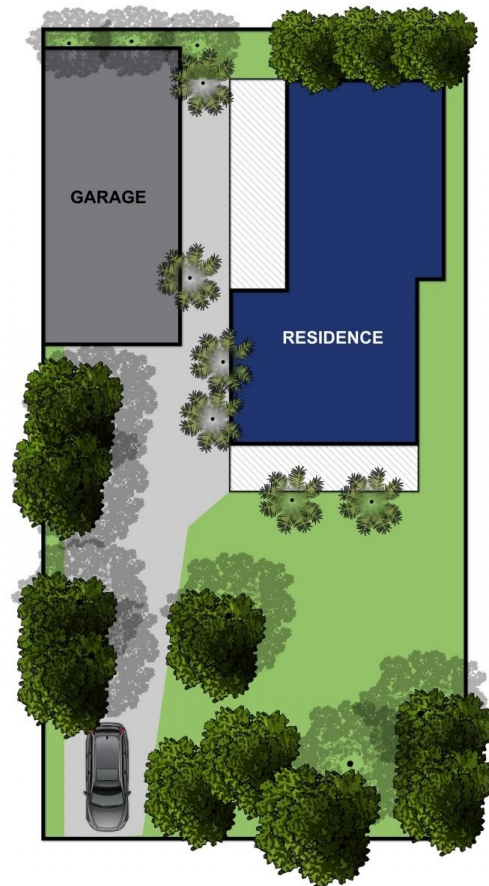
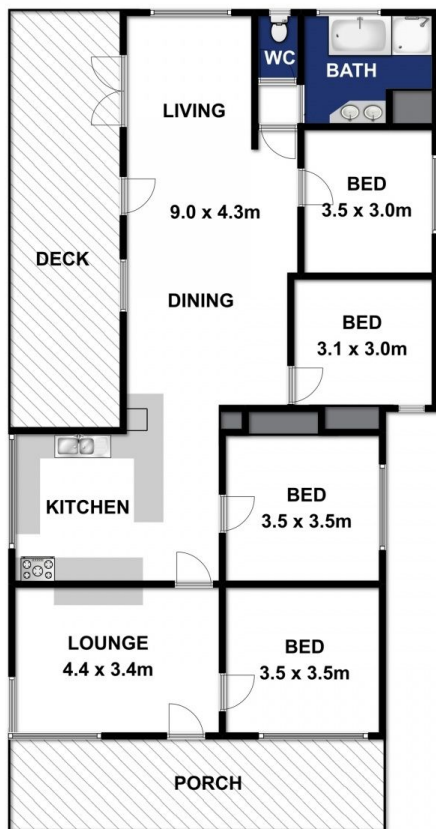
Land Size : 779 sqm
View : <https://www.bellarineproperty.com.au/3934153>



Levi Turner
03 5254 3100



Peta Walter
03 5254 3100



Approx Area 144m²

Whilst bwrn.com.au has made every attempt to ensure the accuracy of the floor plan contained here, measurements are approximate and no responsibility is taken for any error, omission, or mis-statement. This plan is for illustrative purposes only.



88 Hitchcock Avenue, Barwon Heads

bellarineproperty