



16 Heath Close Ocean Grove VIC

3 2 2

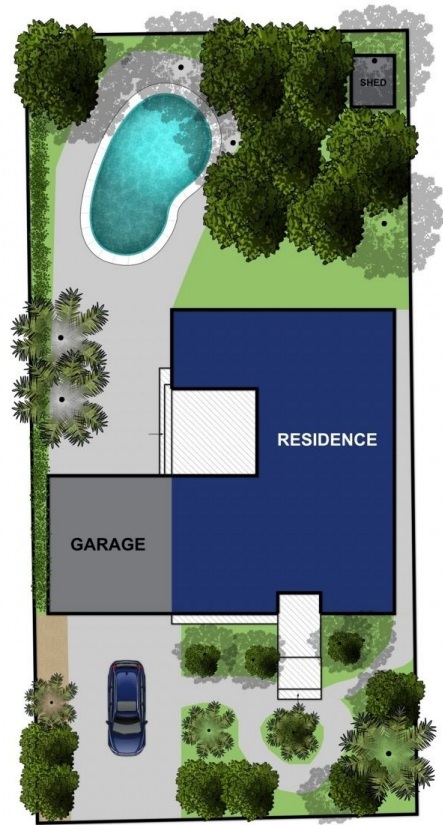
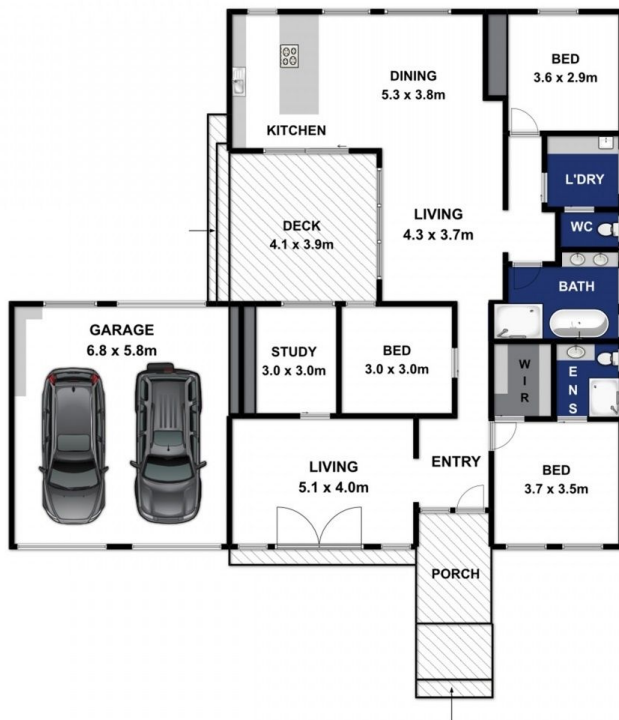
This stylishly renovated property has been given a new lease on life within its superior old Ocean Grove, quiet court location. Quality design elements combine with effortless style within this outstanding family home, sitting in perfect harmony with immaculately landscaped native surrounds. First impressions count - this one speaks volumes!

- Beautifully landscaped gardens convey an immediate sense of welcome upon approach
- Hardwood glazing and rough sawn Cypress Pine add natural texture to the home's facade
- Large picture windows frame manicured outdoor areas and flood the interior with natural light
- Quality fixtures and fittings throughout the entire home gift a clear aesthetic direction
- The north facing living area with hardwood french doors beckons you into the sun-filled gardens
- A study/4th bedroom sits adjacently, with beautiful outlooks across to the swimming pool
- Wool carpets, bespoke joinery and feature lighting highlight the attention to detail here
- A luxurious master suite is the perfect retreat, with WIR

Price : \$ 920,000
Land Size : 834 sqm
View : <https://www.bellarineproperty.com.au/38793>
 30



Toby Lee
 03 5254 3100



Approx Area 204.2m²

Whilst bwrn.com.au has made every attempt to ensure the accuracy of the floor plan contained here, measurements are approximate and no responsibility is taken for any error, omission, or mis-statement. This plan is for illustrative purposes only.



16 Heath Close, Ocean Grove

bellarineproperty