



38 Thomson Drive BARWON HEADS VIC

3 1 2

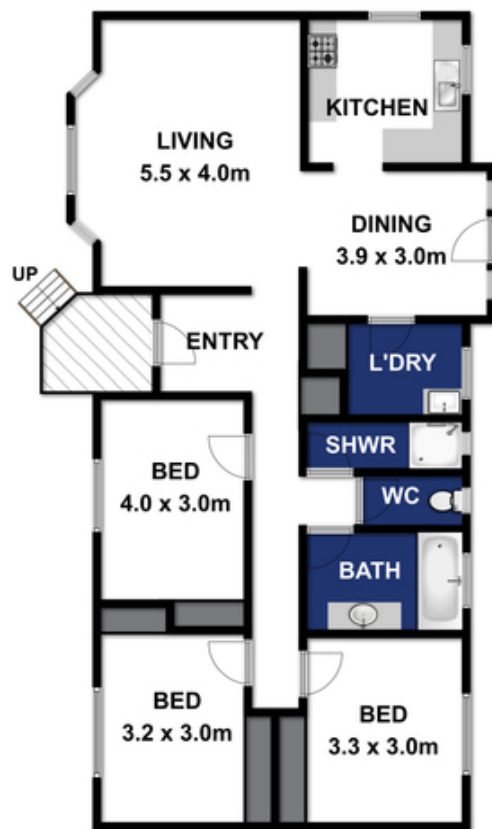
This older style home offers a very large room with bay window, ceiling fan and reverse cycle heating and cooling. Inviting north-facing sun filled kitchen/dining zone offers a 900mm gas cook top and electric oven with plenty of cupboards. The meals area has a door to the external. Main bedroom has a ceiling fan and all bedrooms of a good size and with built in robes. Rooms share a central bathroom that boasts a bath, has separate toilet and also a separate shower room. Roomy laundry with yard access. Rear garden is large and pretty, fully enclosed and has a detached double garage (5x6m approx) with gated access to Hogan Drive. Located in old Barwon Heads - walk to school, beaches, the river and Hitchcock Ave shopping and dining. Pets are welcome.

Price : \$ 385

View : <https://www.bellarineproperty.com.au/3846453>



Christian Bartley
03 5254 3100



Approx Area 92.2m²

Whilst bwrn.com.au has made every attempt to ensure the accuracy of the floor plan contained here, measurements are approximate and no responsibility is taken for any error, omission, or mis-statement. This plan is for illustrative purposes only.



38 THOMSON DRIVE, BARWON HEADS

bellarineproperty