



21 Glyndon Court Barwon Heads VIC

4 2 2

Set in sought-after Barwon Heads this modern 4 bedroom family home is one never to be out-grown and set in a locale you will never want to leave.

-Functional floorplan places parents privately upstairs with a double spa en suite, walk-in robe, large indoor-outdoor living zone and separate study (or nursery).

-Downstairs the minor bedroom wing buds off the central living zone and boasts 3 double bedrooms with BIRs

-Contemporary in finish the family bathroom is well-appointed to downstairs bedrooms and is complete with twin vanity and spa bath with separate toilet

-Family living zone downstairs also facilitates outdoor living flowing seamless to a large deck and lawn, providing dedicated spaces for cooking, meals, dinner parties and relaxation.

-Kitchen overlooks both living and dining space with notable fixtures include; walk-in pantry, integrated 2-draw dishwasher, 90cm gas/electric cooker, hardwood floors, ventilated storage systems.

-Both upper and lower living zones are wonderfully light and warm with wide north-facing aspects and split system ACs.

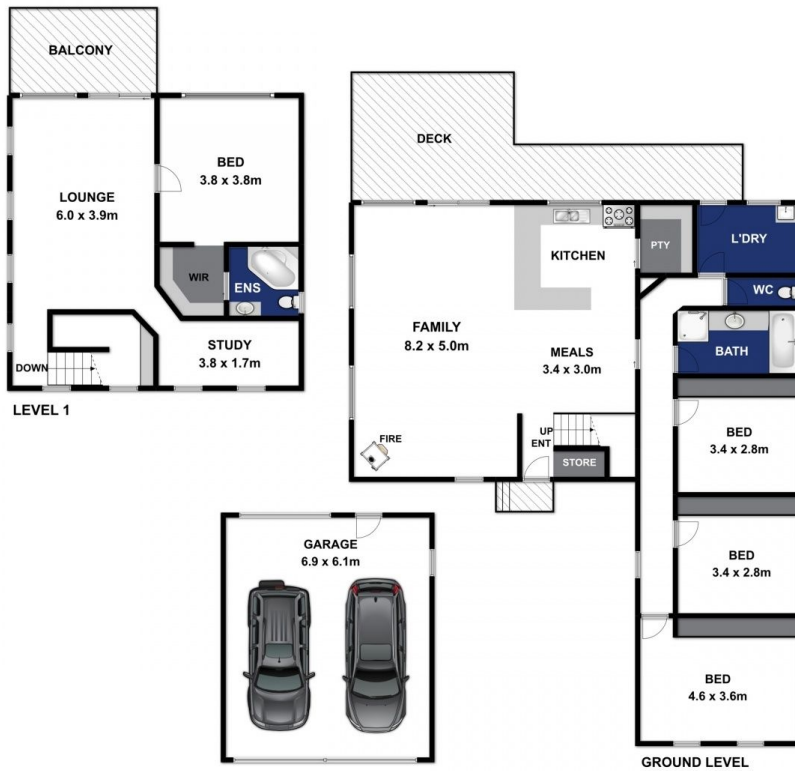
Price : \$ 815,000
Land Size : 684 sqm
View : <https://www.bellarineproperty.com.au/3799504>



Peta Walter
03 5254 3100



Levi Turner
03 5254 3100



Approx Area 275m²

Whilst bwrn.com.au has made every attempt to ensure the accuracy of the floor plan contained here, measurements are approximate and no responsibility is taken for any error, omission, or mis-statement. This plan is for illustrative purposes only.

21 Glyndon Court

bellarineproperty