

15 Basin Road Drysdale VIC

3 2 10

Ahh... the serenity! The land on Basin Road offers true rural respite. Set within an undulating landscape with stands of gums this peaceful 20 acre (8.09Ha approx) property is ideal for equine lovers, or those wanting to escape the rat race and live a more organic, self-sufficient lifestyle. Boasting 2 homes, views to Mount Martha and convenience to town, this property is worthy of inspection.

-Fabulous coastal-rural fusion, just 3mins to Drysdale and 8mins to Ocean Grove beaches

- Original 3-bedroom home;
- Large north-facing kitchen/living/dining hub wrapped by deck, patio and gorgeous vistas
- Rustic features include wood fire, vintage beams, hardwood and concrete floors
- St George cooker, F&P dishwasher, step-in pantry and bespoke timber benches
- Newly renovated bathroom with in situ shower, floating vanity and back-to-wall toilet
- Large country-style laundry
- Main BR with ensuite, BIR and yard access
- BR 2 with WIR, BR3 with WIR and adjoining study nook

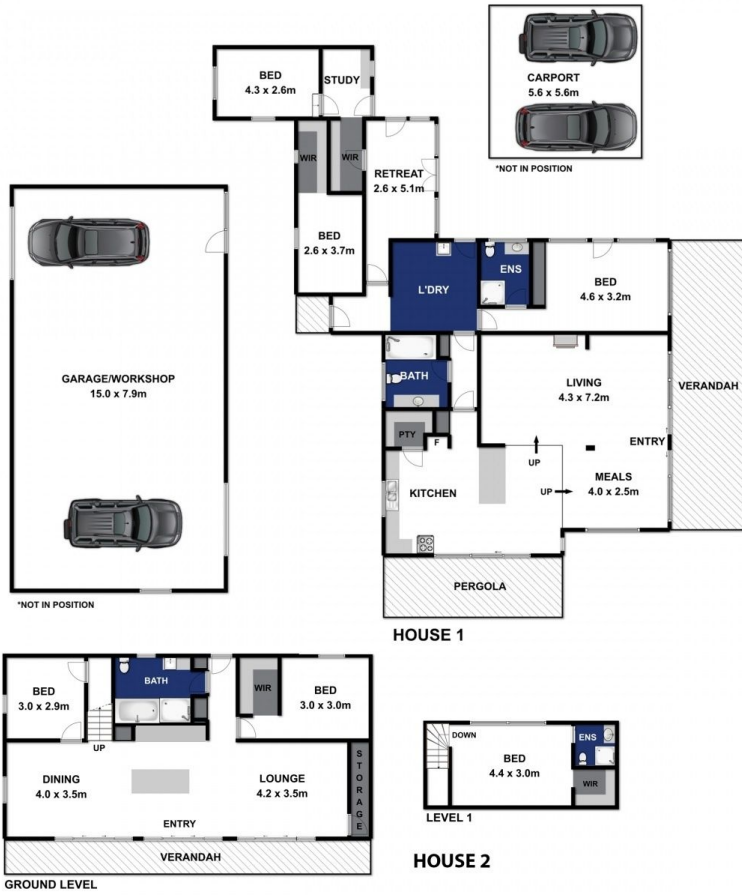
Price : \$ 1,300,000
Land Size : 20 Acres
View : <https://www.bellarineproperty.com.au/37579>
 76



Lee Martin
 03 5297 3888



Dan Halsey
 03 5254 3100



Approx Area 221m²

Whilst bwrn.com.au has made every attempt to ensure the accuracy of the floor plan contained here, measurements are approximate and no responsibility is taken for any error, omission, or mis-statement. This plan is for illustrative purposes only.



15 BASIN ROAD, DRYSDALE

bellarineproperty