



## 9 Heath Close Ocean Grove VIC

3 2 2

CONSTRUCTION COMMENCED! STAMP DUTY SAVINGS MAY APPLY!

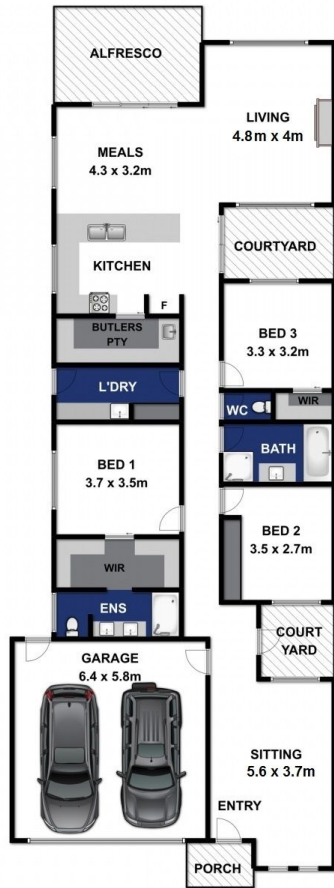
Live the Old Ocean Grove lifestyle in the comfort and luxury of a stunning, brand new townhouse! Situated in the tranquil and leafy streets in one of the township's most desirable streets, this stylish development of just two makes choosing your new home a breeze. Welcome to a wonderful coastal way-of-life!

- Prime position within reach of beach, The Terrace & family-friendly amenities of Surfside
- Low-maintenance design is compatible with a 'lock & leave' lifestyle
- Simplify without downsizing: the spacious floor plan offers ample space for entertaining
- Coastal facade opens to a desirable single level, 3 bed floorplan with 2 living zones
- Decor includes muted tones of grey and white with pops of colour and texture
- Warm spotted gum engineered flooring and plush carpet to bedrooms
- On-trend lighting, door and window furniture and stylish

**Price** : \$ 850,000  
**Land Size** : 420 sqm  
**View** : <https://www.bellarineproperty.com.au/3717421>



**Dan Halsey**  
**03 5254 3100**



Approx Area 224.88m<sup>2</sup>

Whilst [bwrn.com.au](http://bwrn.com.au) has made every attempt to ensure the accuracy of the floor plan contained here, measurements are approximate and no responsibility is taken for any error, omission, or mis-statement. This plan is for illustrative purposes only.

## 1/9 HEATH CLOSE, OCEAN GROVE

bellarineproperty



Approx Area 224.88m<sup>2</sup>

Whilst [bwrn.com.au](http://bwrn.com.au) has made every attempt to ensure the accuracy of the floor plan contained here, measurements are approximate and no responsibility is taken for any error, omission, or mis-statement. This plan is for illustrative purposes only.



## 2/9 HEATH CLOSE, OCEAN GROVE

bellarineproperty