



22 Daintree Way OCEAN GROVE VIC

3 2 2

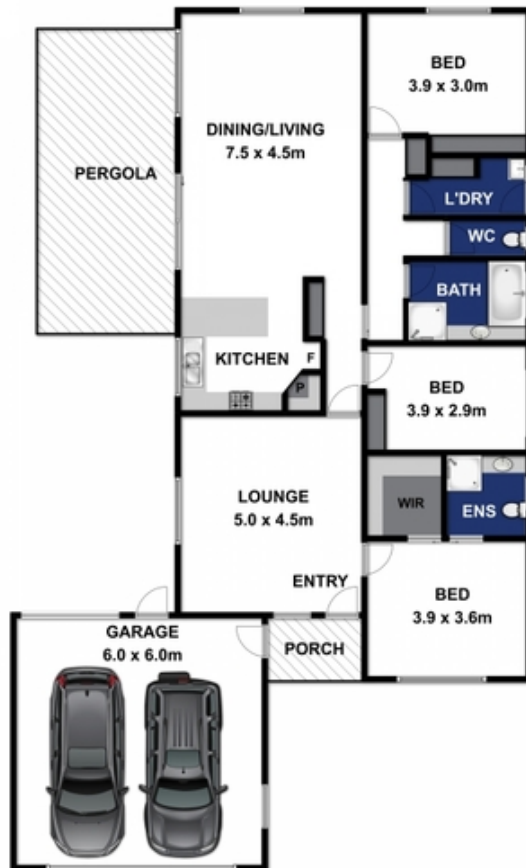
This bright open-plan home offers zoned living with garden views. Master bedroom with full ensuite and walk in robe at front of house, with separate private lounge. Through to kitchen, dining & family room at the rear, bedrooms 2 and 3 share central family bathroom, separate toilet and large well organised laundry, gas ducted heating and evaporative cooling throughout, plus split system in family room for year round comfort. North facing undercover alfresco access directly from dining/kitchen provides the setting for outdoor entertaining. Low maintenance and fully fenced rear yard ensure privacy. Double garage with rear roller door access through to lush rear garden plus small shed.

Price : \$ 440

View : <https://www.bellarineproperty.com.au/3705425>



Christian Bartley
03 5254 3100



Approx Area 191.8m²

Whilst bwrn.com.au has made every attempt to ensure the accuracy of the floor plan contained here, measurements are approximate and no responsibility is taken for any error, omission, or mis-statement. This plan is for illustrative purposes only.



22 DAINTREE WAY, OCEAN GROVE

bellarineproperty