



38 Thomson Drive Barwon Heads VIC

3 1 2

AUCTION SATURDAY 24TH JUNE @ 12PM (UNLESS SOLD PRIOR)

Renovators will jump on this exciting opportunity in sought-after Thomson Drive. Set at the leafy western end of the street, this solid brick veneer, on a corner block, has 'Renovators Delight' written all over it! The property is clean, neat and tidy. The block is flat, clear and ready to go (STCA). Hurry to inspect. Beat the crowds!

- Central location, but unaffected by summer crowds
- Walk to school, beaches, the river and Hitchcock Ave shopping and dining
- Large lounge with bay window and Fujitsu heat/cool air conditioner
- Inviting north-facing kitchen/dining zone
- Kitchen with electric Westinghouse wall oven, grill and 900mm gas cooktop
- Dining with fully glazed northern aspect and yard access
- 3 bedrooms with built-in robes
- Bathroom with bath and vanity
- Separate shower room
- Separate toilet

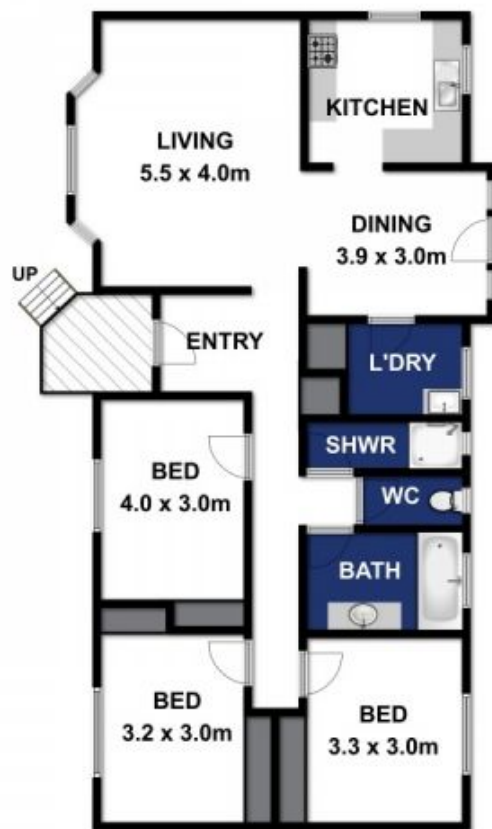
Price : \$ 795,000
Land Size : 580 sqm
View : <https://www.bellarineproperty.com.au/3670097>



Levi Turner
03 5254 3100



Peta Walter
03 5254 3100



Approx Area 92.2m²

Whilst bwrn.com.au has made every attempt to ensure the accuracy of the floor plan contained here, measurements are approximate and no responsibility is taken for any error, omission, or mis-statement. This plan is for illustrative purposes only.



38 THOMSON DRIVE, BARWON HEADS

bellarineproperty