



## 10A Whitton Street Ocean Grove VIC

3 2 1

A show-stopping abode crafted with an industrious-chic feel and clever luxe touches throughout. Set across two magnificent levels showcasing the beautiful riverscape of the Barwon panorama.

- A style statement entry with polished concrete floors and timber staircase with glass balustrade
- Beautiful wire sphere pendant lighting shadow-casts wispy abstract images to its entrance surrounds
- From the front living room, a natural flow paces through to the sleek on-trend open plan domain
- The kitchen, butler's pantry, drop-zone & laundry are intuitively linked, with a smart zoning design
- The lounge area feels ambient and inviting with a gas-fired log heater set in a concrete bust
- A black chrome linear pendant LED light superbly defines the dining setting with style and elegance
- The open area is bathed in natural light and effortlessly expands to the entertaining deck and yard
- The kitchen is defined with a striking matt-noir sink & tapware, set into stunning stonotop benches
- Cook and clean with ease on high calibre SMEG appliances, including a 900mm oven & gas-hob

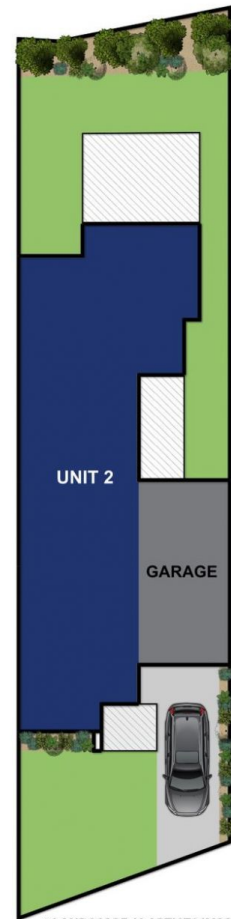
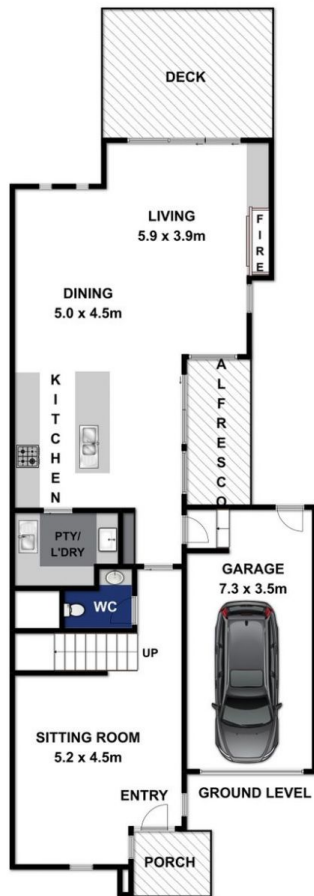
**Price** : \$ 1,025,000  
**Land Size** : 310 sqm  
**View** : <https://www.bellarineproperty.com.au/36612>  
 15



**Dan Halsey**  
 03 5254 3100



**Toby Lee**  
 03 5254 3100



\* LANDSCAPE IS ARTISTS IMPRESSION ONLY



Approx Area 263.7m<sup>2</sup>

Whilst [bwrn.com.au](http://bwrn.com.au) has made every attempt to ensure the accuracy of the floor plan contained here, measurements are approximate and no responsibility is taken for any error, omission, or mis-statement. This plan is for illustrative purposes only.

**10A WHITTON STREET, OCEAN GROVE**

bellarineproperty