



1 Affleck Court Barwon Heads VIC

4 2 2

Set yourself up for life in this wonderful four bedroom family home with stunning north facing orientation, safeguarding warmth and passive solar results throughout the entire year.

Price : \$ 815,000
Land Size : 766 sqm
View : <https://www.bellarineproperty.com.au/3639374>

Highlighted by vaulted ceilings and hardwood floors, open plan living spaces spill out to the voluminous undercover outdoor area, encapsulating northern sun and the indoor/outdoor lifestyle we all aspire to achieve.

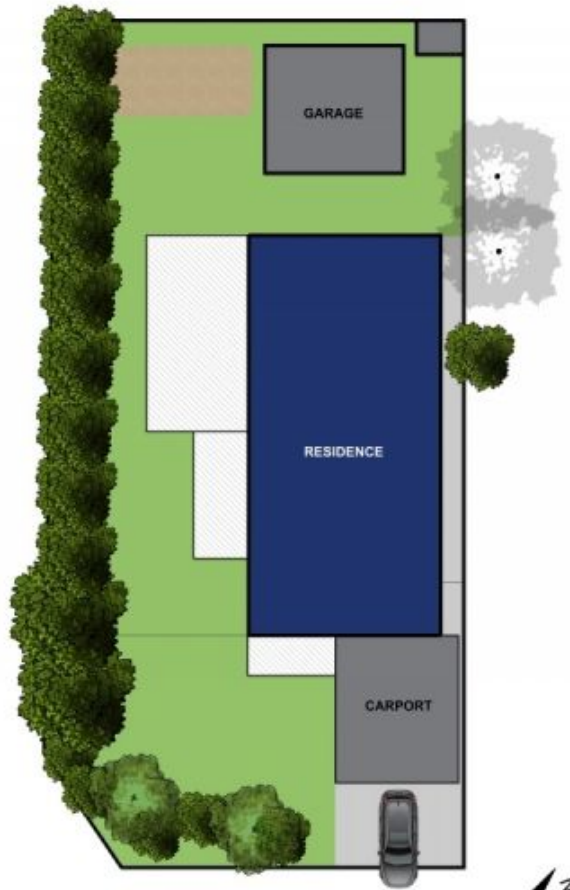
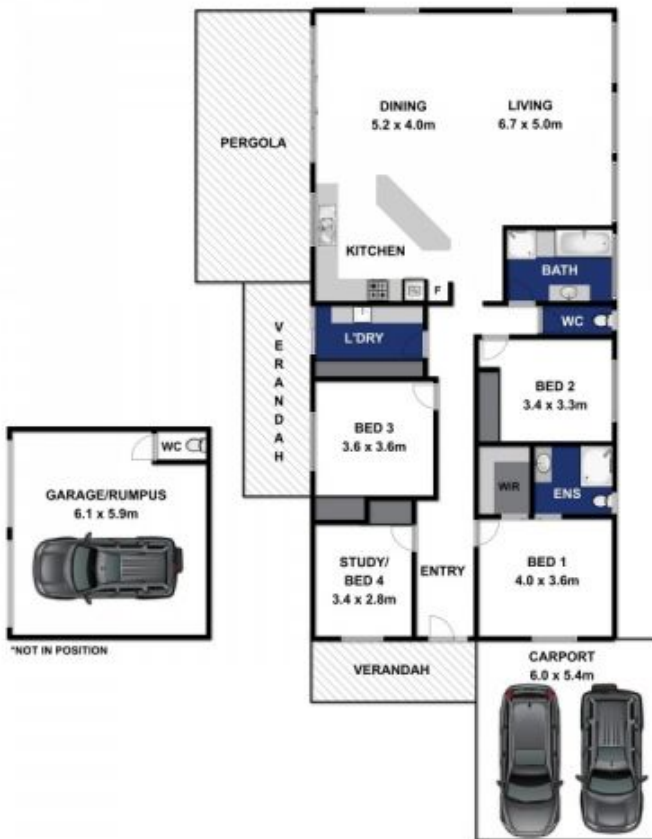


Peta Walter
03 5254 3100



Levi Turner
03 5254 3100

- Situated on a large corner allotment in a highly sought, family friendly location.
- Easy walking distance to the Barwon River, village centre and sporting facilities.
- Accessible to walking and cycling tracks, linking up to the estuary and surrounds.
- Spend your days fishing or paddleboarding with the tide towards the infamous Bluff.
- O/P kitchen, living and dining spaces are wrapped by ample glazing, capturing all aspects.
- Modern kitchen with stainless steel appliances and large island bench overlooking the living.
- Double sliding door access onto the outdoor alfresco deck,



Approx Area 286.6m²

Whilst bwm.com.au has made every attempt to ensure the accuracy of the floor plan contained here, measurements are approximate and no responsibility is taken for any error, omission, or mis-statement. This plan is for illustrative purposes only.



1 AFFLECK COURT, BARWON HEADS

bellarineproperty