



34 Wallington Road OCEAN GROVE VIC

3 2 2

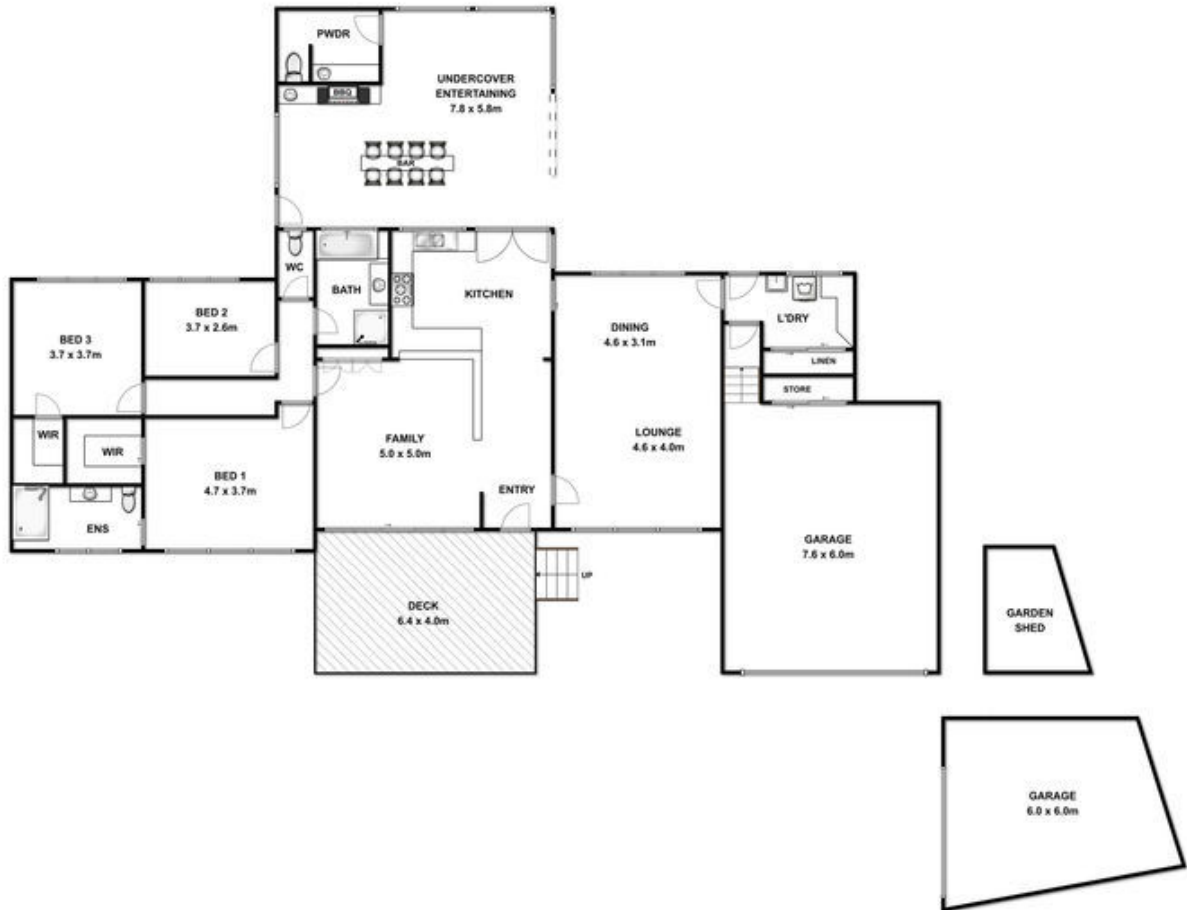
This home comes with elegant living spaces, contemporary kitchen and an impressive alfresco and lush backyard. Timber flooring throughout, the living offers built-in joinery and flows to the kitchen across a low-line servery. The entertainer's kitchen with 900mm oven with gas cooktop including wok burner. Ample bench space and a large pantry. The adjacent formal dining and lounge is beautifully spacious with dual aspect and reverse cycle. The alfresco zone is an extension of the indoors, through double doors from the kitchen. Nestled under its own timber-lined gable, this protected entertainment area is walled by glass, facilitating year round use and offering private garden views with separate powder room, built-in BBQ, sink, wok burner, bar and more. Bedrooms comprise the master, with walk-in robe and modern en suite. Two further bedrooms (one with walk-in robe) share a bright central bathroom with bath and shower and separate toilet. The laundry provides ample storage. Ducted vacuum and gas central-heating throughout. The double garage has storage and direct access to the laundry. With a design complimentary to the home, the detached boat shed/work shop (potential studio) and garden shed are bonuses. The yard also offers; a caravan storage pad, large vegie box,

Price : \$ 550

View : <https://www.bellarineproperty.com.au/3581942>



Christian Bartley
03 5254 3100



Whilst every attempt has been made to ensure the accuracy of the floor plan contained here, measurements of doors, windows, rooms and any other items are approximate and no responsibility is taken for any errors, omission, or mis-statement. This plan is for illustrative purposes only and should be used as such by any prospective purchaser. The services, systems and appliances shown have not been tested and no guarantee as to their operability or efficiency can be given.