



### 17/110 Tomara Drive Barwon Heads VIC

3 2 2

High above the exclusive 13th Beach Golf Links community, this plush penthouse apartment offers the ultimate atmosphere for relaxation within a lifestyle wonderland! The home frames epic 360o views over both championship courses, the clubhouse and Lake Murtnagurt. With sculptural dune line vistas and private beach access, this unique home is epic!

- This penthouse is elite - a jewel in this estate's crown
- The spectacular begins when private lift doors reveal the breathtaking links panorama
- Double-glazing throughout creates a serene acoustic and thermal bubble
- Hardwood flooring and the lavish use of Caesarstone denote quality and craftsmanship
- Entry is into the vast OP living zone, encased in glass with 2 scenic balconies
- Balcony views are awesome, ideal for sun worshipping, relaxation and dining
- Luxurious stone surfaces team well with the suite of Fisher and Paykel appliances
- The Jetmaster open fireplace sets a perfect ambiance for quiet nights in

**Price** : \$ 915,000

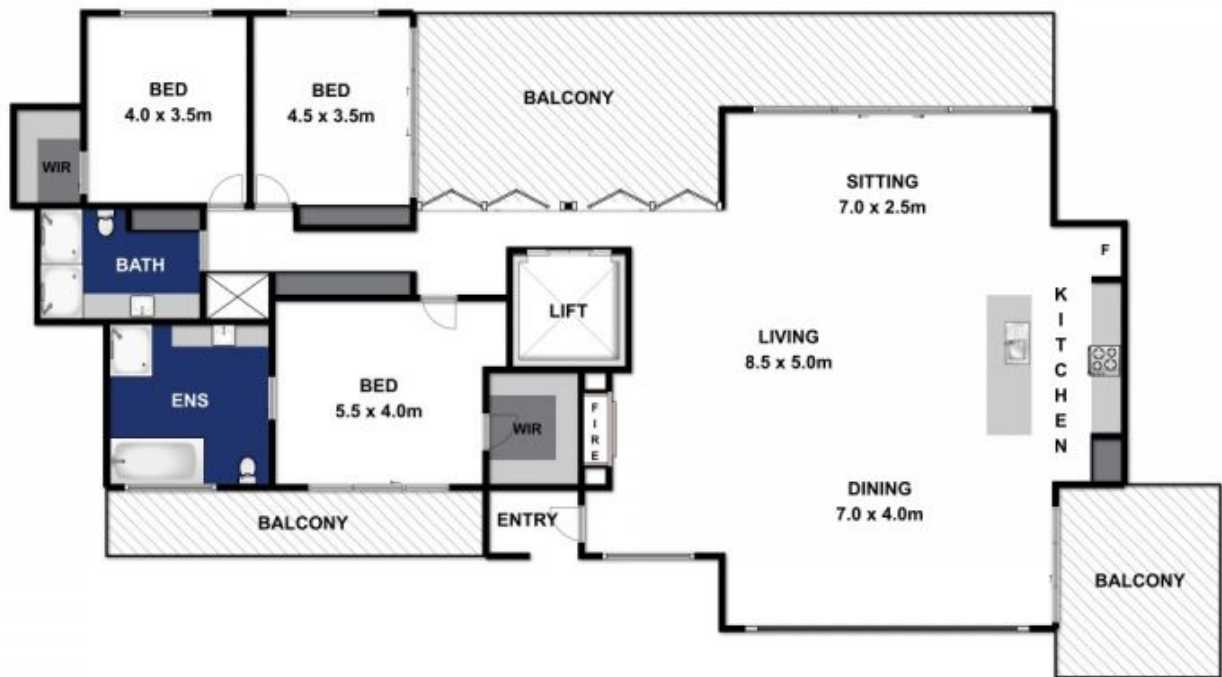
**View** : <https://www.bellarineproperty.com.au/3474619>



**Levi Turner**  
03 5254 3100



**Peta Walter**  
03 5254 3100



Approx Area 288.3m<sup>2</sup>

Whilst [bwm.com.au](http://bwm.com.au) has made every attempt to ensure the accuracy of the floor plan contained here, measurements are approximate and no responsibility is taken for any error, omission, or mis-statement. This plan is for illustrative purposes only.

**17/110 TOMARA DRIVE, CONNEWARRE**

bellarineproperty