



2/115 Hitchcock Avenue Barwon Heads VIC

2 1 1

Graced with location perfection, this inner Barwon Heads home is undeniably convenient. Set between The Village Park and cosmopolitan shopping and dining strip on Hitchcock Avenue, this bright and spacious 2-bedroom home is also within an easy stroll of the river and beach. So perfect for holidays or a downsize!

Price : \$ 740,000
Land Size : 356 sqm
View : <https://www.bellarineproperty.com.au/34693>
 70

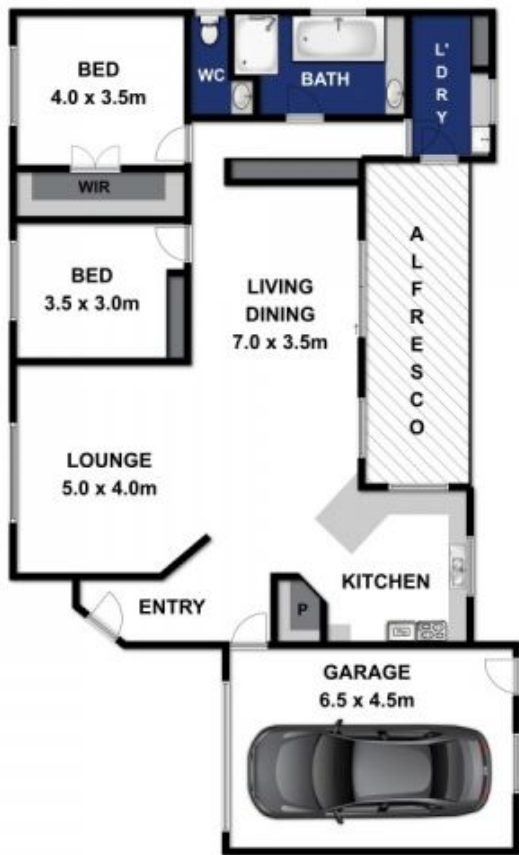
- Solid brick build with established gardens and north-facing aspect to indoor-outdoor living
- Surprisingly spacious indoors with one large open plan kitchen/living zone
- The open design incorporates areas for cooking, dining, indoor-outdoor living and lounge
- The north-south aspect encourages natural ventilation, especially cool sea breezes
- Kitchen with fan-forced oven, instant heat cooktop, F&P dishdrawer and alfresco views
- Bedroom zone includes 2 queen-size rooms, large family bathroom and powder room
- Big laundry at the rear with robe-like storage and yard access
- Main bedroom with walk-in robe, 2nd bedroom with built-in robe



Peta Walter
 03 5254 3100



Levi Turner
 03 5254 3100



Approx Area 137.7m²

Whilst bwm.com.au has made every attempt to ensure the accuracy of the floor plan contained here, measurements are approximate and no responsibility is taken for any error, omission, or mis-statement. This plan is for illustrative purposes only.



2/115 HITCHCOCK AVENUE, BARWON HEADS

bellarineproperty