



1/22 Ewing Blyth Drive Barwon Heads VIC

4 **3** **4**

AUCTION: 24TH SEPTEMBER AT 11:00AM, UNLESS SOLD PRIOR

Set in a prestigious position on ascent to The Barwon Heads Bluff, this outstanding coastal home delivers luxury, comfort and convenience. Just metres from the picturesque Barwon River mouth and world renowned surf beaches, the idyllic location is key. The as-new 4-bedroom, 3-bathroom, 2-living zone home on a large allotment, strengthen the desirability of this coastal package.

- The Western red cedar exterior and solid hardwood decks fit the dune location perfectly
- Visually appealing indoors with vaulted ceilings that accentuate space in the portico and living hub
- The long northern elevation incorporates both living zones and alfresco entertaining area
- Two zone-able living areas accommodates adult and children's living needs
- The versatile floorplan boasts 2 master bedrooms with en suite facilities
- The first sits at the façade with a lockable access suitable for B and B or guest purposes

Land Size : 801 sqm

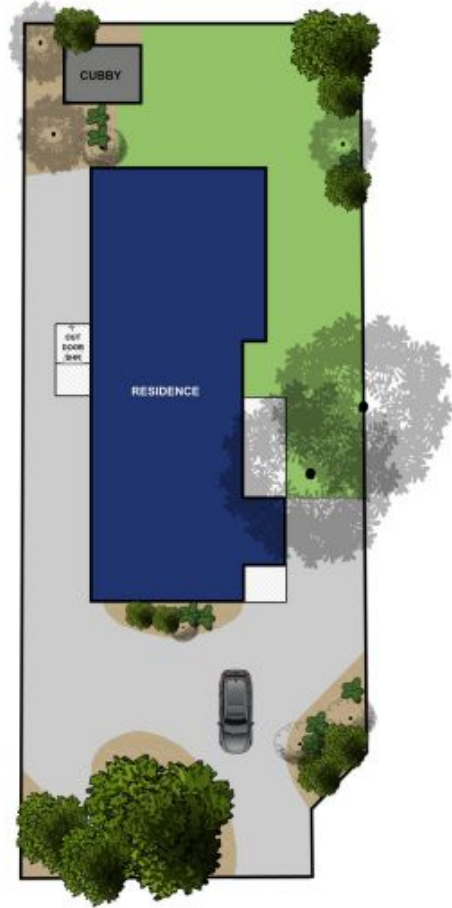
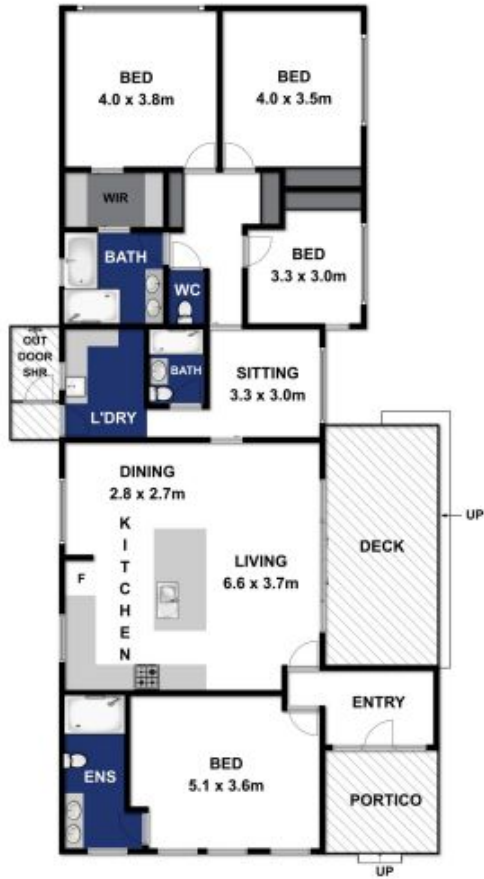
View : <https://www.bellarineproperty.com.au/31610>
10



Christian Bartley
03 5254 3100



Levi Turner
03 5254 3100



Approx Area 178.8m²

Whilst bwrn.com.au has made every attempt to ensure the accuracy of the floor plan contained here, measurements are approximate and no responsibility is taken for any error, omission, or mis-statement. This plan is for illustrative purposes only.

1/22 EWING BLYTH DRIVE, BARWON HEADS

bellarineproperty