



6/10-12 Grandview Parade Barwon Heads VIC

2 1 1

When location is key look no further! Bookended by the Barwon River Bridge & Hitchcock Ave Village, this peaceful unit is about as central as you can get & without a doubt. Only 120m to the IGA supermarket and 220m from the river! A rare opportunity to get into this tightly-held niche that nestles between the Village & the river/beach. Downsize, holiday with ease or holiday let!

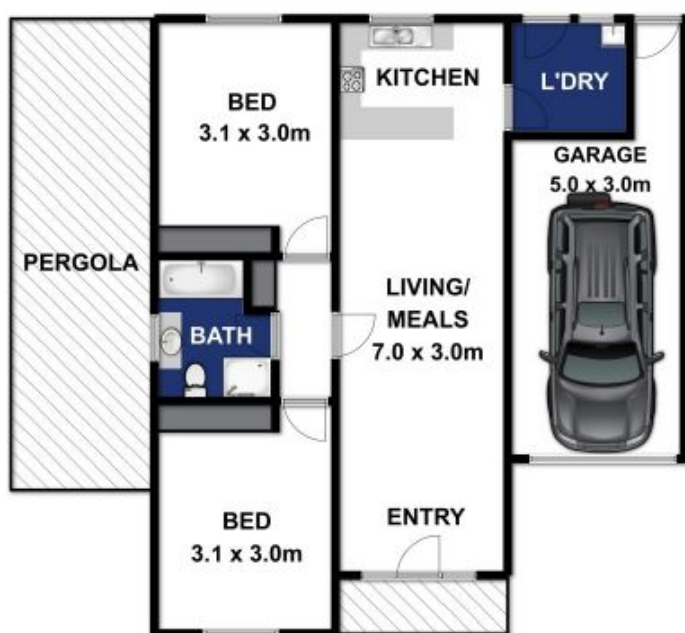
- Leave the car at home & walk to the river/beach, IGA, boutiques, cafes & Barwon Heads Golf Course
- This pleasant unit ticks all the boxes as a low-maintenance lock & leave
- Huge potential as a holiday let or permanent rental
- 2-bed floor plan is perfect for quiet weekends away & relaxed entertaining
- Open-plan kitchen/living/meals area catches the warm sunlight
- Spotless kitchen with upright cooker & ample bench space
- 2 queen-sized bedrooms with large built-in robes flank the neat bathroom
- Bathroom with bath & shower
- SS-AC inverter maintains an ideal climate in all seasons
- Sunny low-maintenance north facing rear garden with a

Land Size : 191 sqm

View : <https://www.bellarineproperty.com.au/2977251>



Levi Turner
03 5254 3100



Approx Area 95.84m²

Whilst bwrn.com.au has made every attempt to ensure the accuracy of the floor plan contained here, measurements are approximate and no responsibility is taken for any error, omission, or mis-statement. This plan is for illustrative purposes only.



6/10-12 GRANDVIEW PARADE, BARWON HEADS

bellarineproperty