



## 1 Furneaux Close BARWON HEADS VIC

4  2  2 

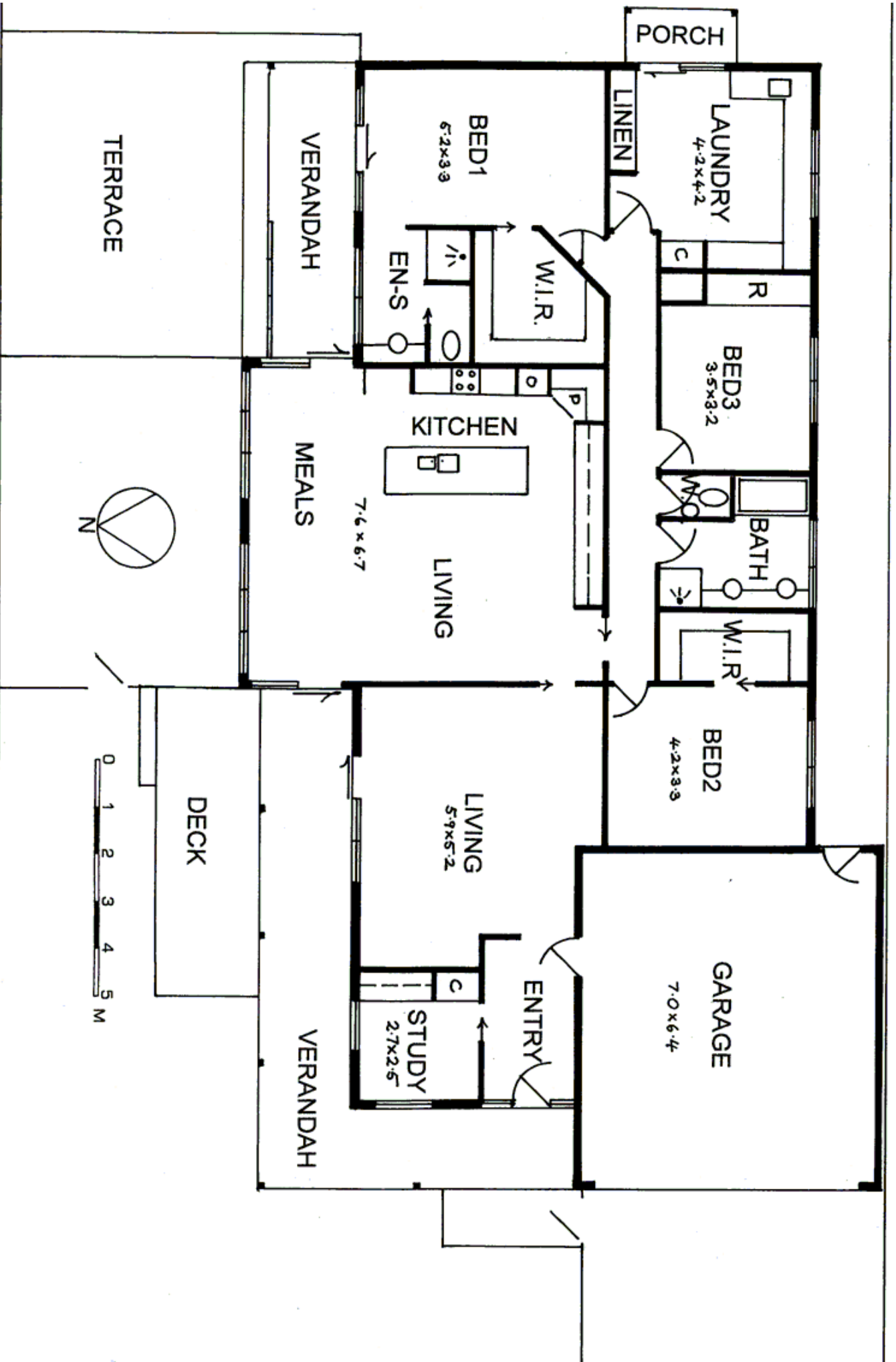
This modern home is positioned on a corner allotment to take advantage of delightful garden outlook with Northerly orientation - provides natural warmth through the windows in winter and year round light. Enter through the front gate into a lovely ambient garden that leads to the expansive entrance. Upon entry polished timber floors reflect throughout. Leading into a grand lounge room, you will find warmth or cooling from the overhead ducted ceiling vents that penetrates to all rooms. Slider doors capturing the garden and light lead to the very large decked area surrounding both north and west aspects of the home. Further on, you enter the very hub of the home - this large area comprises an open plan lounge, meals and kitchen. Again north facing windows and sliders lead to the external entertaining decks, a table for 10 fits comfortably along the wall of windows and the kitchen is every womans dream. Kitchen boasts electric cook top and oven, dishwasher and a vast quantity of cupboards that would be hard to fill. Bedroom 1 has its own incredible walk in robe and ensuite with shower and a separate toilet. Main bedroom also has its own sliding door to escape to the lovely garden beyond. Bedroom 2 is main size with a walk in robe and bedroom 3 has a built in robe. Study/office is

**Price** : \$ 485

**View** : <https://www.bellarineproperty.com.au/2203174>



**Christian Bartley**  
03 5254 3100



PORCH

LAUNDRY  
4.2x4.2

LINEN

BED1  
6.2x3.3

W.I.R.

EN-S

VERANDAH

TERRACE

R

BED3  
3.5x3.2

KITCHEN

MEALS  
7.6x6.7

LIVING

BATH

W.I.R.

BED2  
4.2x3.3

GARAGE  
7.0x6.4

LIVING  
5.9x5.2

ENTRY

STUDY  
2.7x2.5

VERANDAH

DECK

