



8/12-14 Seabank Drive Barwon Heads VIC

3 🏠 2 🚿 1 🚗

This classy 2-story villa boasts parkland frontage, a high-end fit out and a lengthy list of quality additions. The parkland views calm indoor living spaces on both levels. The deck and balcony bask in the wide green backdrop, and are fabulous areas for sunny breakfasts and breezy summer afternoon entertaining. A convenient and sophisticated space for holidays or a downsize!

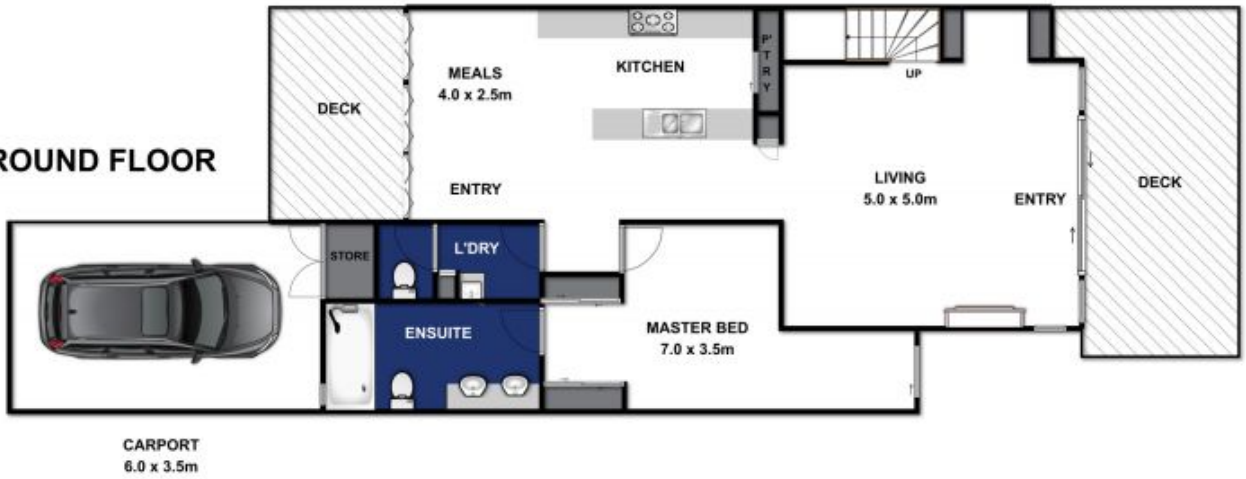
Land Size : 239 sqm
View : <https://www.bellarineproperty.com.au/19190>
 34

- The rear courtyard with remote gate provides space for private outdoor activities
- The lower level, with master suite, is self-contained leaving the upstairs for children or guests
- Downstairs living is open plan with a central kitchen, and living and dining spaces walled by glass
- The kitchen boasts quality European appliances, Caesarstone and an under mounted Franke sink
- Bosch induction cooktop, Smeg oven and Miele dishwasher and range hood
- The step-in pantry with appliance bench hides kitchen clutter
- Double glazed stacker doors link indoor dining with the BBQ deck and rear courtyard
- BBQ plumbed to mains gas

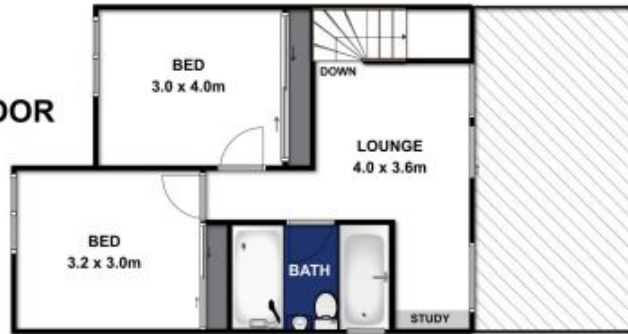


Levi Turner
03 5254 3100

GROUND FLOOR



FIRST FLOOR



8/12-14 SEABANK DRIVE, BARWON HEADS

Whilst every attempt has been made to ensure the accuracy of the floor plan contained here, measurements of doors, windows, rooms and any other items are approximate and no responsibility is taken for any error, omission, or mis-statement. This plan is for illustrative purposes only and should be used as such by any prospective purchaser. The services, systems and appliances shown have not been tested and no guarantee as to their operability or efficiency can be given.

bellarineproperty