



2 Shelburn Way Ocean Grove VIC

3 2 2

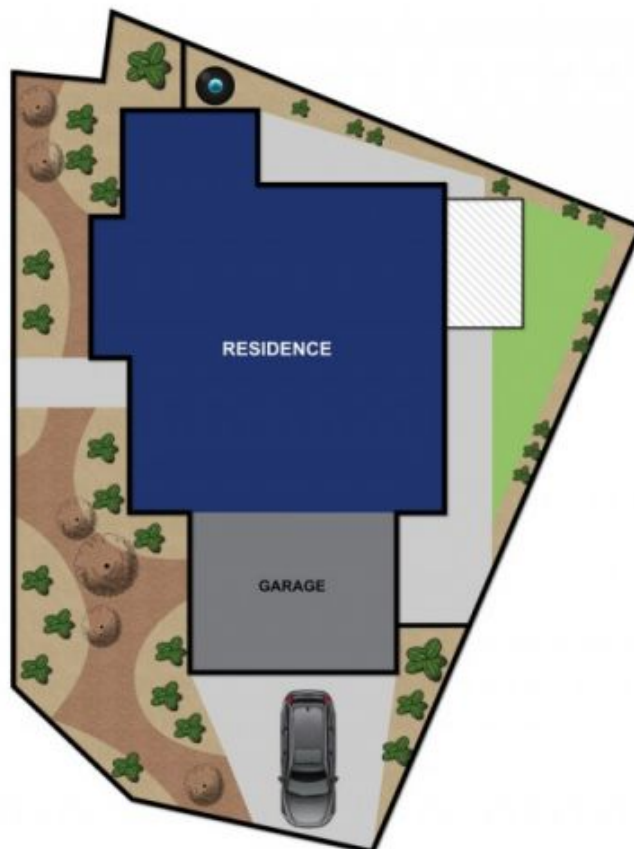
Where space is at a premium, this impressive three bed, two bath Townhouse uses clever design to create a spacious home that ticks every box! Smart zoning makes areas for privacy and togetherness with a sunny living hub and outdoor entertaining area at rear, and bedrooms to front. Ideal as a first home, investment or downsizer, this impeccable home is set close to all that Ocean Grove has to offer, within the green surrounds of the Kingston Estate. Seeing believing! Inspect today.

- Stacked slate and dark brick exterior with striking landscaping sets the tone for this trendy home
- Light, neutral colour scheme used throughout to enhance sense of spaciousness
- Floor to ceiling glazing brings in floods of natural light, with slim profile roller blinds throughout
- Tiles to main traffic areas, with on-trend textured carpeting to bedrooms and living
- Wide entrance hall with view down to light main living hub, connects spaces effortlessly
- Sunny, open-plan living, dining and kitchen to rear of house, opening onto covered courtyard
- Lux kitchen with sandy Caesarstone bench tops and

Price : \$ 420,000
Land Size : 414 sqm
View : <https://www.bellarineproperty.com.au/17396>
 40



Dan Halsey
 03 5254 3100



2 SHELburn WAY, OCEAN GROVE

Whilst every attempt has been made to ensure the accuracy of the floor plan contained here, measurements of doors, windows, rooms and any other items are approximate and no responsibility is taken for any error, omission, or mis-statement. This plan is for illustrative purposes only and should be used as such by any prospective purchaser. The services, systems and appliances shown have not been tested and no guarantee as to their operability or efficiency can be given.