



### 3/156 The Parade OCEAN GROVE VIC

3 2 1

This 3 BR unit offers privacy and a breathtaking coastal and ocean panorama. Views encompass the Bellarine Hills, Queenscliff and Point Lonsdale, across The Rip to Cape Schanck, with Lake Victoria and the Collendina dune line in the foreground. Breathtaking views this wide are rare and sought-after. Have them for yourself!

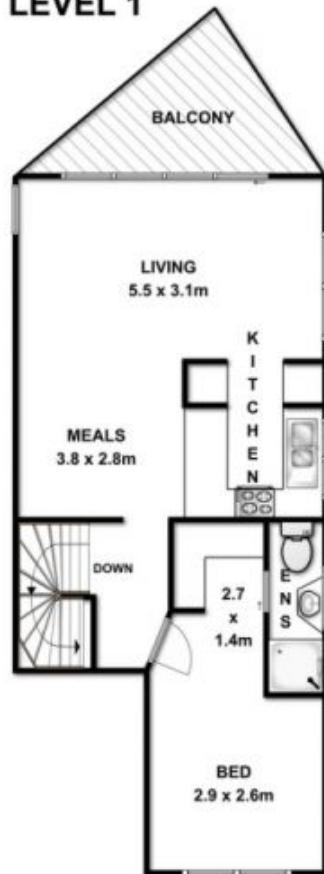
- Two-storey, rear positioned, brick unit with southern and eastern outlooks from both levels
- Driveway to a single garage and double gates that access a private backyard
- Protected and private entry with lush gardens to the front door
- Immaculately presented with modern appeal
- Bright entrance with under stair storage and internal garage access
- Lower level floor plan offers 2 BRs, a bathroom, separate toilet and laundry
- Both bedrooms naturally lit, one with built-in robes
- Bathroom with corner spa bath, vanity and shower
- Spacious laundry with great storage and glass back door to paved courtyard
- Courtyard screened with lush foliage and protected by the

**Price** : \$ 438,000  
**Land Size** : 243 sqm  
**View** : <https://www.bellarineproperty.com.au/1503468>



**Christian Bartley**  
**03 5254 3100**

## LEVEL 1



## GROUND

