



10 Coutta Court OCEAN GROVE VIC

4 2 2

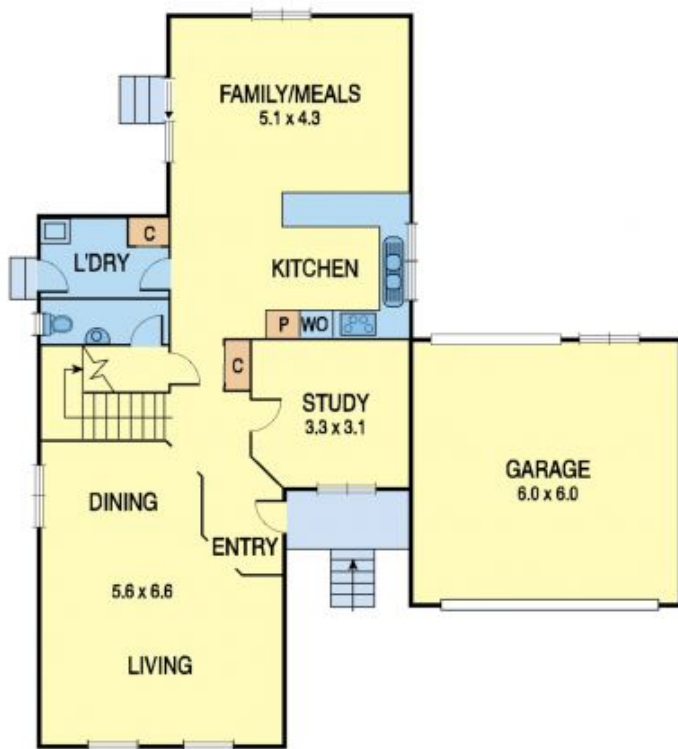
A comfortable and cosy home with all the mod cons privatised by its end-of-court location and established gardens. Perched on the northern side of the Surfside basin with views towards Begola Wetlands and the majestic dunes, enjoy the glow of twinkling lights at nightfall. You'll feel at home here!

- 2-storey design: downstairs for living and entertaining, upstairs for sleep and quiet retreat
- Study and lounge/dining area bud off the entrance hall
- Study with floor-to-ceiling views of the entry portico an ideal home office!
- Substantial lounge/dining with windows framing front garden and rear deck views
- Contemporary pebble fireplace and LG inverter AC provide atmosphere and comfort
- A convenient powder room services the lounge/dining and kitchen/living/meals spaces
- Polished kitchen - stainless steel apps including gas cooktop, double oven and dishwasher
- Breakfast bar/servery to living/meals encourages chit chat between the chef and others
- Living/meals with cosy wood burning heater flows to an

Price : \$ 535,000
Land Size : 627 sqm
View : <https://www.bellarineproperty.com.au/1503423>



Christian Bartley
03 5254 3100



GROUND FLOOR



FIRST FLOOR