



2/10 Callistemon Court OCEAN GROVE VIC

3 2 2

Highly regarded builders Dow Constructions are consistently producing high quality, awarded projects. Their latest, offering a contemporary townhouse in the quiet leafy surrounds of Callistemon Court, is no exception. Designed with easy care, open planned living, while privately positioned, you are sure to feel immediately at home. Encased by a modern earthy facade, the combination of brick and timber reflects the coastal surrounds.

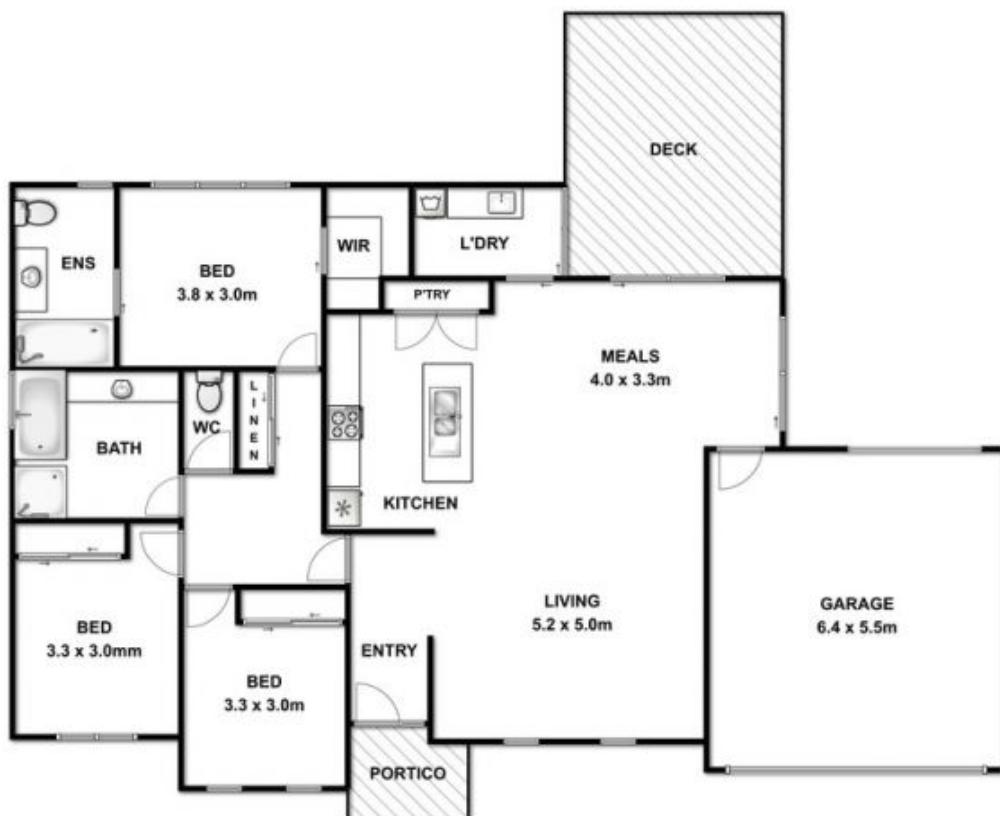
- Spotted gum flooring gives warmth and character
- Walk in and you will notice the timber feature panel for extra character
- High gloss white cabinetry and polished stone bench tops for a high end finish
- 900mm upright stove amongst stainless steel appliances
- Quality continues through to wet areas with in situ showers and feature basins
- Private and low maintenance living, ideal for investors, holiday makers or downsizers
- The living area boasts morning sun from the north-east
- Climate control is provided by ducted heating and reverse cycle split system
- Ceiling fans feature in bedrooms for extra comfort

Price : \$ 565,000

View : <https://www.bellarineproperty.com.au/1503417>



Dan Halsey
03 5254 3100



2/10 CALLISTEMON COURT, OCEAN GROVE

Whilst every attempt has been made to ensure the accuracy of the floor plan contained here, measurements of doors, windows, rooms and any other items are approximate and no responsibility is taken for any error, omission, or mis-statement. This plan is for illustrative purposes only and should be used as such by any prospective purchaser. The services, systems and appliances shown have not been tested and no guarantee as to their operability or efficiency can be given.