



20 Canis Crescent OCEAN GROVE VIC

3 2 2

This home's geometric facade captures the sweeping ocean views privy to residents of Canis Crescent. The high vantage point takes in breathtaking views from The Bluff to Point Lonsdale's Lighthouse as well as serene vistas across Lake Victoria. Spacious indoor/outdoor living is better than most: the blue ocean the backdrop to the south, an incredible garden oasis a delight to the north.

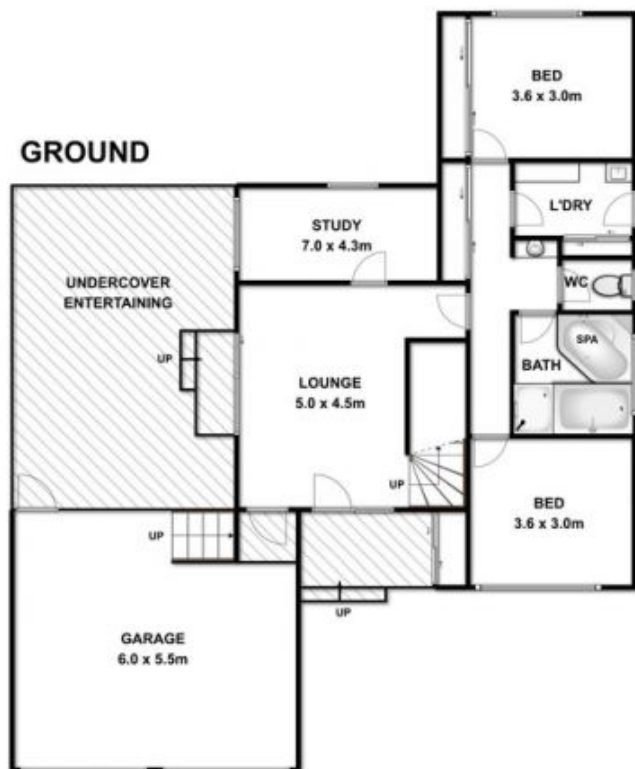
- Two-story design with sizeable indoor & outdoor living spaces on both levels
- Side access for extra vehicle/boat/caravan storage
- Minutes walk to schools, shops, beach and sporting facilities
- Flexible floor plan boasts a master bedroom plus 2-3 additional bedrooms & a study
- Upstairs, amidst heavenly views, kitchen/living joins the balcony for total ocean appreciation
- Formal dining with beautiful ocean, dune & lake views (optional 4th bedroom or nursery)
- Balcony with glass balustrade offers cool breezes & is proportioned for entertaining
- Picturesque corner kitchen with splashback glazing to inspirational views

Price : \$ 730,000
Land Size : 659 sqm
View : <https://www.bellarineproperty.com.au/15034>
 13



Dan Halsey
 03 5254 3100

GROUND



LEVEL 1



20 CANIS CRESCENT, OCEAN GROVE

Whilst every attempt has been made to ensure the accuracy of the floor plan contained here, measurements of doors, windows, rooms and any other items are approximate and no responsibility is taken for any error, omission, or mis-statement. This plan is for illustrative purposes only and should be used as such by any prospective purchaser. The services, systems and appliances shown have not been tested and no guarantee as to their operability or efficiency can be given.