



12 Sheraton Court OCEAN GROVE VIC

3 2 2

This fantastic family sized home sits within a peaceful court. A mere 10 minute walk to stretches of sandy white beaches and walking tracks will ensure an active outdoor lifestyle, as will the nearby open green parkland of Collendina Reserve, a place of leisure for adults, kids and pets. Two living areas, three bedrooms and study provide enough space for a growing family yet also ensures a great start to those entering the market.

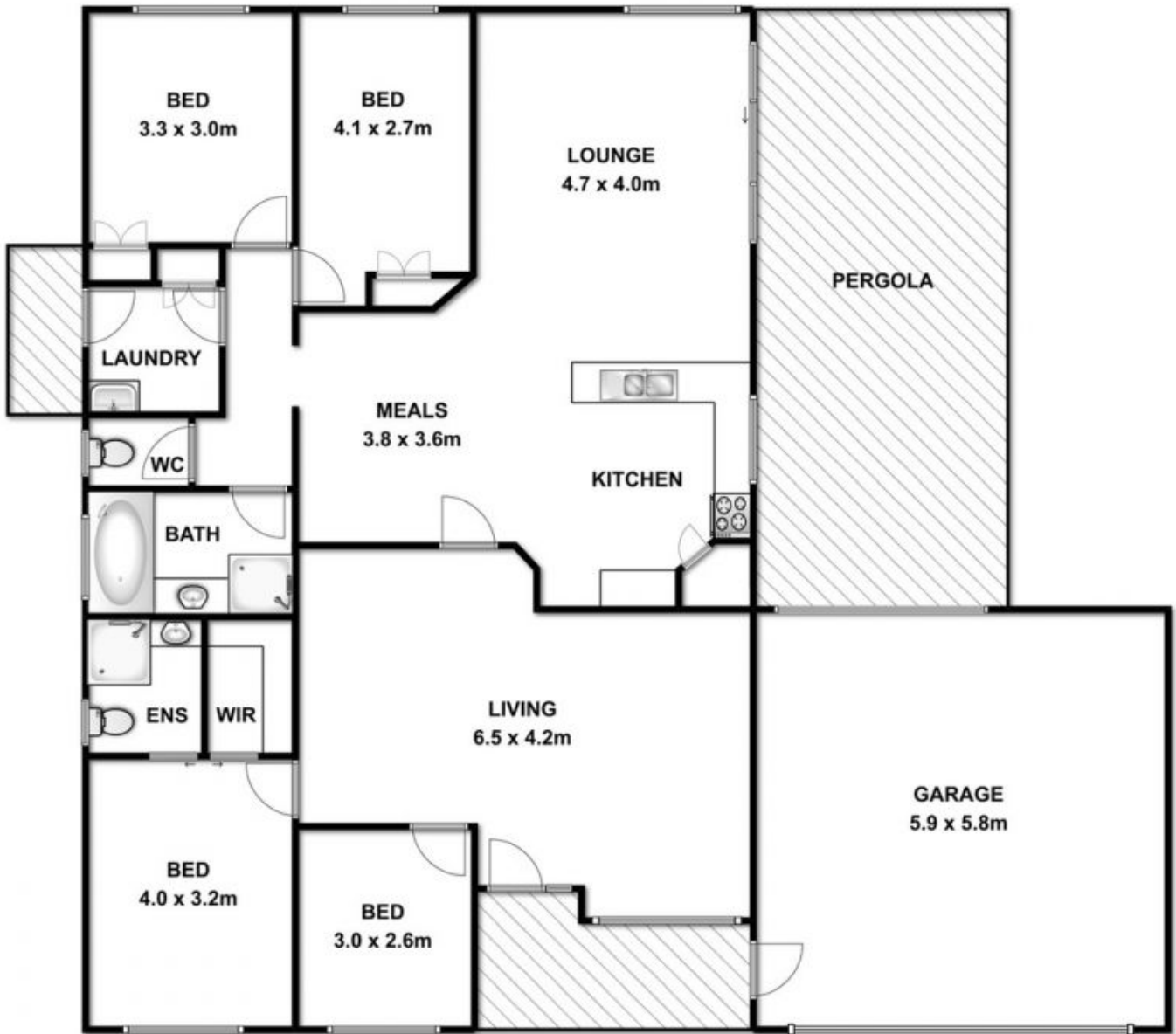
With its great beachside locale, whether tenanted full time or kept for your own enjoyment this property offers true value for money.

- Well sized 660m² (approx) plot only a short walk to Collendina Recreation Reserve and beaches
- Solid and secure, the brick home features double garage with rear roller door access
- Great court location is perfect for families with small children
- Tall ceilings enhance light and space, existing through entire floorplan
- Updated kitchen features high quality St George and Bosch appliances with double fridge cavity
- Easy link from indoors to outdoor room through large

Price : \$ 450,000
Building Size : 2 Sqrs
Land Size : 660 sqm
View : <https://www.bellarineproperty.com.au/1503407>



Christian Bartley
03 5254 3100



12 SHERATON STREET, OCEAN GROVE



Whilst every attempt has been made to ensure the accuracy of the floor plan contained here, measurements of doors, windows, rooms and any other items are approximate and no responsibility is taken for any error, omission, or mis-statement. This plan is for illustrative purposes only and should be used as such by any prospective purchaser. The services, systems and appliances shown have not been tested and no guarantee as to their operability or efficiency can be given.