



9 Sheepwash Road BARWON HEADS VIC

2 1 3

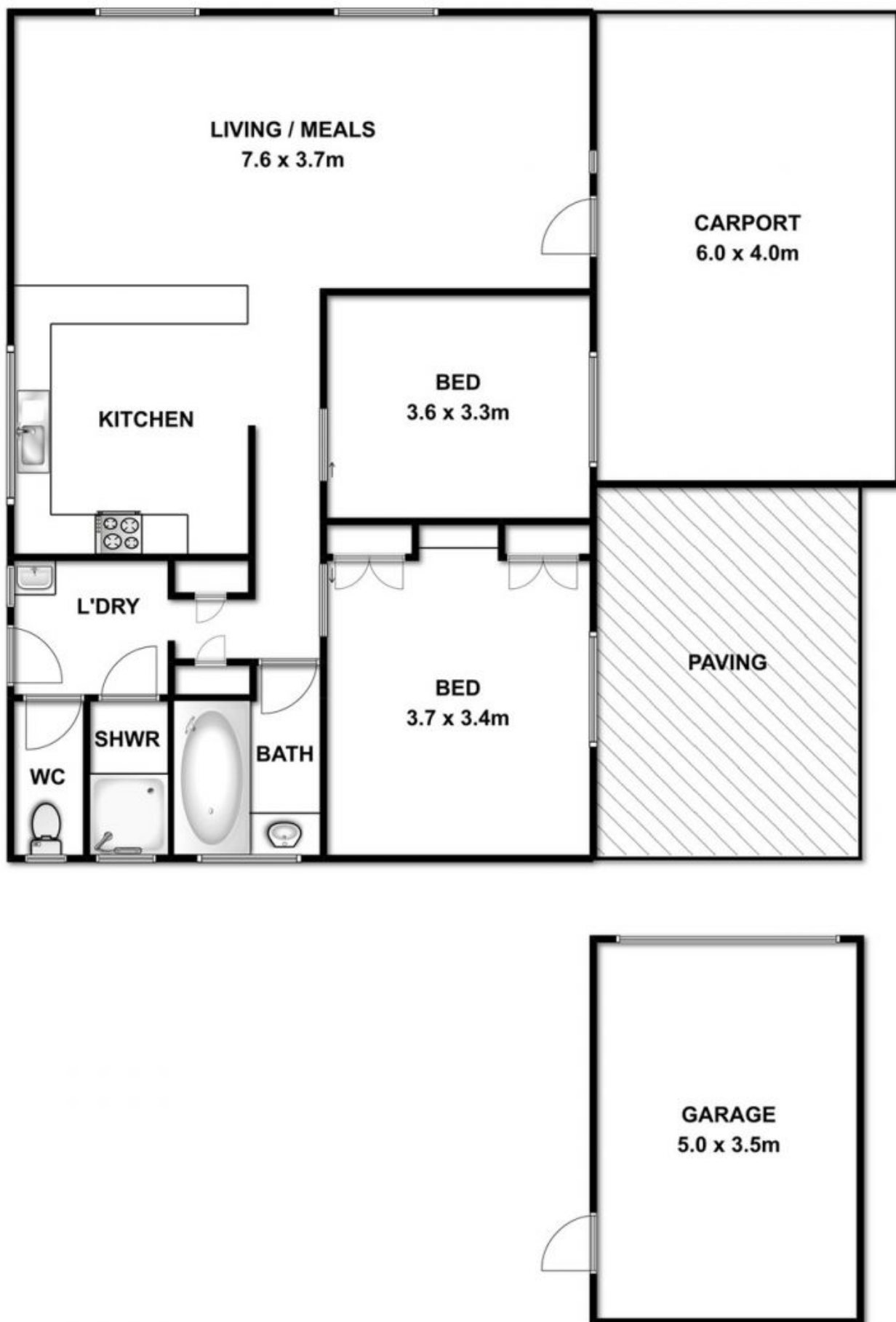
Be it for investment, holiday or development purposes, this robust home on 613sqm will perform! Sited in an excellent locale, adjacent to the unique and diverse Village Park, this pleasing location will keep youngsters occupied for long periods of time. In fact, its the perfect spot for your forever home!

Price : \$ 455,000
Building Size : 1 Sqrs
Land Size : 613 sqm
View : <https://www.bellarineproperty.com.au/1503401>

- Close to the town centre, walk to the school, beach, river, shops and community garden
- Solid brick home, over one level, has robust bones for refurbishment or renovation (STCA)
- East facing, receiving morning sun to the living area
- Interior with large picture windows and exposed beams
- Open plan living/meals/kitchen at the facade with leafy parkland views
- Kitchen with electric cook top, Chef wall oven and Robinhood range
- Two bedrooms, double in size, one with built-in robes and dressing table
- Bathroom with bath and vanity
- Separate shower room for convenience
- Separate toilet
- Laundry with linen storage and backyard access



Christian Bartley
03 5254 3100



9 SHEEPWASH ROAD, BARWON HEADS



Whilst every attempt has been made to ensure the accuracy of the floor plan contained here, measurements of doors, windows, rooms and any other items are approximate and no responsibility is taken for any error, omission, or mis-statement. This plan is for illustrative purposes only and should be used as such by any prospective purchaser. The services, systems and appliances shown have not been tested and no guarantee as to their operability or efficiency can be given.