



**1/35 Geelong Road BARWON HEADS VIC**

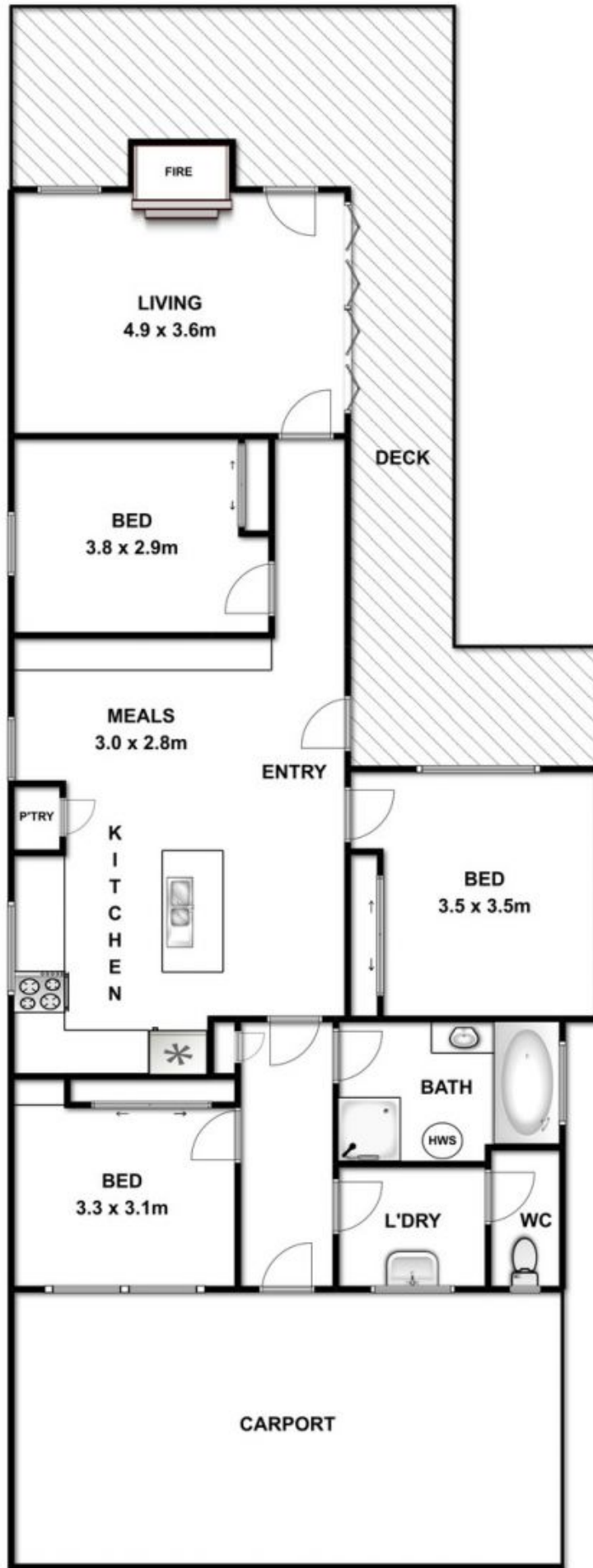
3 1 1

Opposite 54 acres of parkland and sporting facilities, an original beach shack has been transformed to a contemporary coastal home with a distinct warmth and character that is rarely achieved. Not an inch remains untouched throughout three bedrooms and two living spaces where earthy tones mix with extensive use of timber adorning both the homes interior and exterior. A combination of finishes includes textured render, traditional weatherboards and an extensive use of timber panelling overlaying the facade in many inventive ways such as the horizontal cladding of the original chimney. Separate to an open kitchen dining area, formal living surrounds a gas log fire, placed within the original chimney breast. With a northerly aspect, the lounge connects seamlessly with outdoors through aluminium bifolds opening to the east, meeting decking that stretches beneath the skillion roofline across the length of two living spaces. The warmth and character is further captured in the outdoor living spaces where decking extends into the north facing yard for endless summertime entertaining, with great atmosphere created by the built in fire pit and banquet seating.

**Price** : \$ 585,000  
**Land Size** : 294 sqm  
**View** : <https://www.bellarineproperty.com.au/1503397>



**Christian Bartley**  
**03 5254 3100**



Whilst every attempt has been made to ensure the accuracy of the floor plan contained here, measurements of doors, windows, rooms and any other items are approximate and no responsibility is taken for any error, omission, or mis-statement. This plan is for illustrative purposes only and should be used as such by any prospective purchaser. The services, systems and appliances shown have not been tested and no guarantee as to their operability or efficiency can be given.