



2/10 Milborne Drive OCEAN GROVE VIC

3 2 1

VENDOR IS NEGOTIABLE AND WANTS TO SETTLE BY CHRISTMAS!

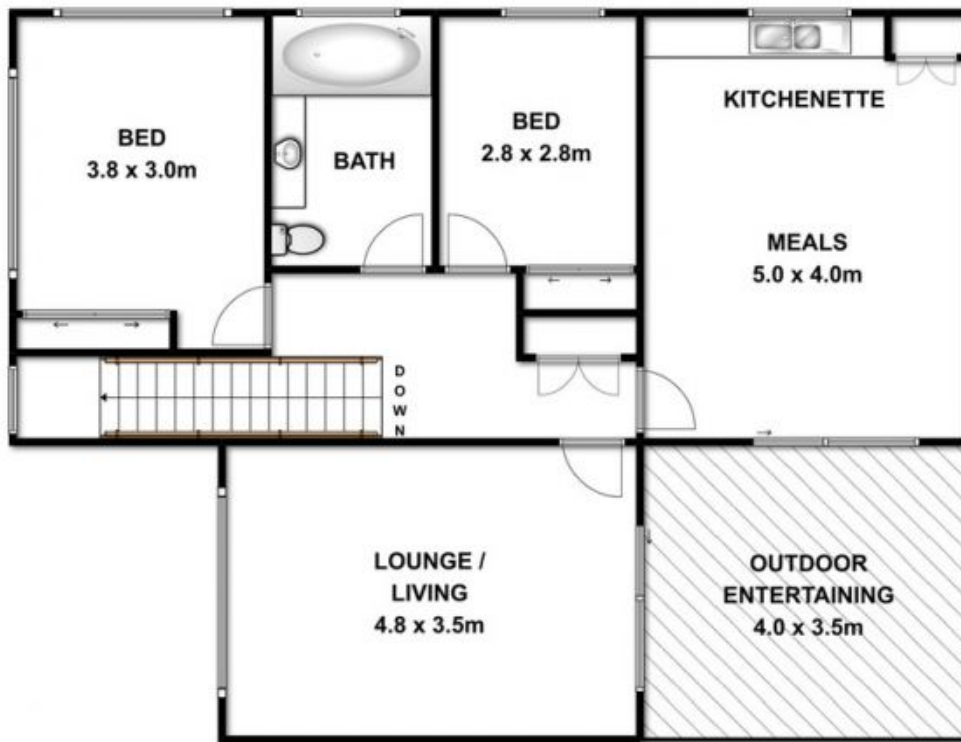
Live light in this bright and spacious contemporary townhouse, conveniently close to parks, shops and sporting facilities. Low maintenance in design, and with nothing more to do, it will appeal to down sizes, couples and investors.

- Upper and lower levels are fully self-contained - possible tenancy options
- Three bedrooms share a bathroom upstairs, master with semi en suite downstairs
- Fitted robes and ceiling fans to all bedrooms
- Fresh coastal appeal with sandstone facade and established palms
- Striking interior decor of coffee tones with textured floor tiles and block out roller blinds
- Expanses of glass privatised by courtyards and the upstairs terrace
- Living areas flow to elegantly landscaped outdoor spaces through wide glass sliders
- Downstairs, kitchen/living adjoins formal dining, both

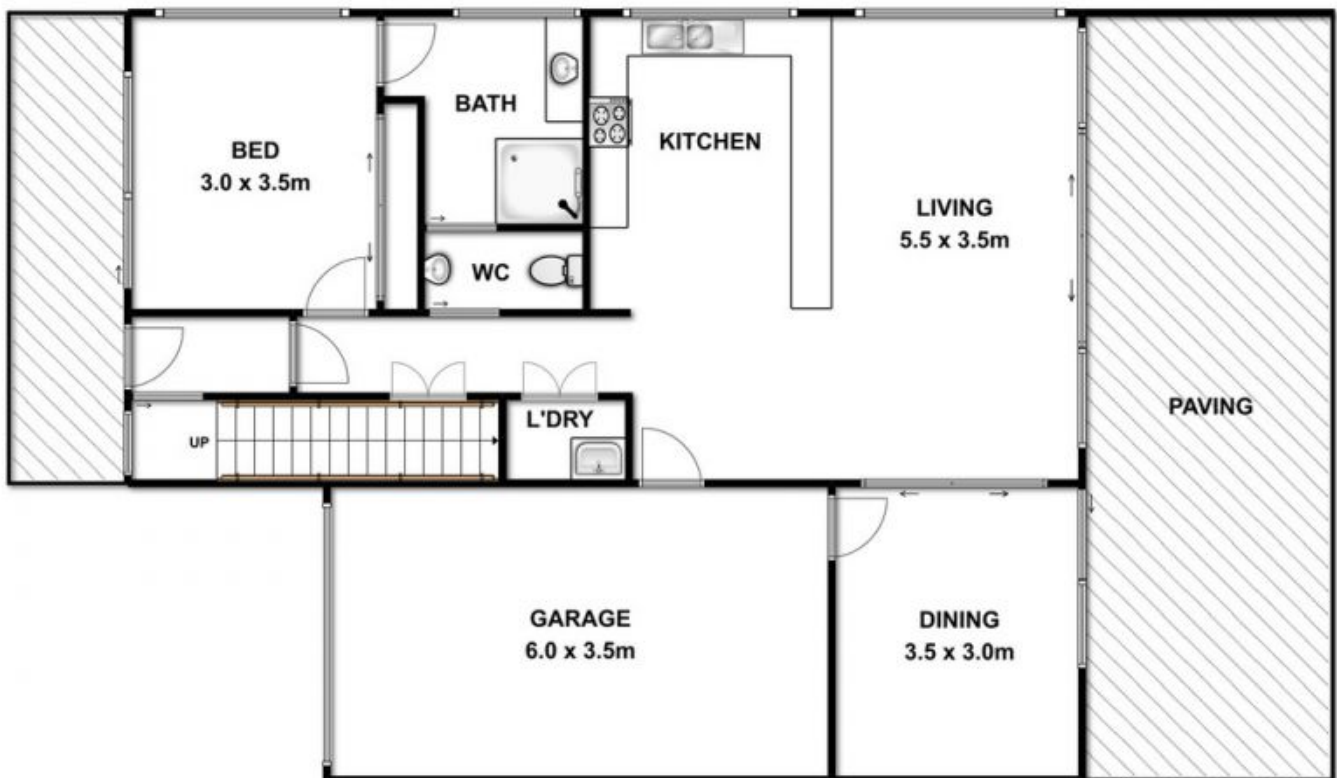
Price : \$ 399,000
Land Size : 220 sqm
View : <https://www.bellarineproperty.com.au/1503387>



Christian Bartley
03 5254 3100



LEVEL 1



GROUND LEVEL

2/10 MILBORNE DRIVE, OCEAN GROVE



Whilst every attempt has been made to ensure the accuracy of the floor plan contained here, measurements of doors, windows, rooms and any other items are approximate and no responsibility is taken for any error, omission, or mis-statement. This plan is for illustrative purposes only and should be used as such by any prospective purchaser. The services, systems and appliances shown have not been tested and no guarantee as to their operability or efficiency can be given.