



7 Lawrenny Court BARWON HEADS VIC

4 2 2

Distinctive coastal style combines with a spacious floor plan in this contemporary four bedroom family home.

- Set on 737sqm in a cul-de-sac next to Warrenbeen reserve
- The spacious floor plan provides dedicated space for formal living, study & casual living
- Passive solar design principles, ducted gas heating, gas solar hot water and double glazing
- The extensive outdoor living, dining and entertaining zone buds off from an internal deck
- Sleeping quarters are zoned for privacy
- Presented throughout with as-new carpets and spotless wet areas
- The double garage with remote access features terrific floor-to-ceiling storage.

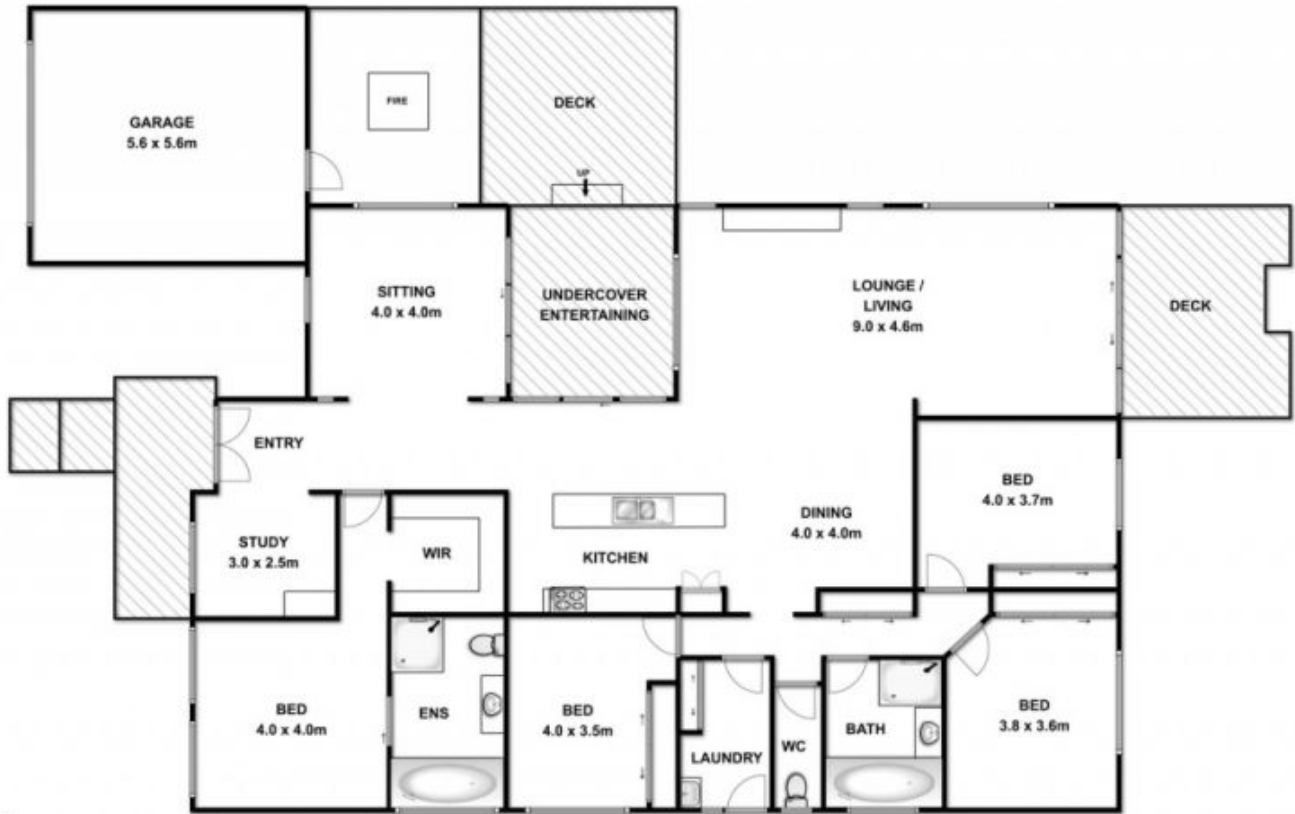
Price : \$ 765,000
Land Size : 737 sqm
View : <https://www.bellarineproperty.com.au/1503360>



Christian Bartley
03 5254 3100



Levi Turner
03 5254 3100



Whilst every attempt has been made to ensure the accuracy of the floor plan contained here, measurements of doors, windows, rooms and any other items are approximate and no responsibility is taken for any error, omission, or mis-statement. This plan is for illustrative purposes only and should be used as such by any prospective purchaser. The services, systems and appliances shown have not been tested and no guarantee as to their operability or efficiency can be given.