



## 1 Walyunga Mews OCEAN GROVE VIC

This stunning property boasts style and comfort on a low maintenance block without compromising outdoor space or storage. Natural light plays a pivotal role in this well designed home with floor to ceiling feature windows at every turn allowing a green aspect from delightful gardens to infiltrate each room. Clean modern lines inside compliment the modern but classic design of the brick and rendered faade which is enhanced by stunning, colourful ornamental trees throughout the well established gardens.

Highly polished timber floors lead through the entry way onto the solid timber staircase. A tiled open plan living space is surrounded by north facing windows and includes a stunning galley style kitchen with feature windows set within the splashback, allowing a splash of green to brighten the neutral coloured kitchen. French doors leading from the dining space spill out onto a private multi level decked area with built in seating. A functional privacy screen adds a design feature while a beautifully landscaped garden helps to create a secluded green oasis. The versatile corner block has been beautifully landscaped including lawned areas and paved pathways surrounding

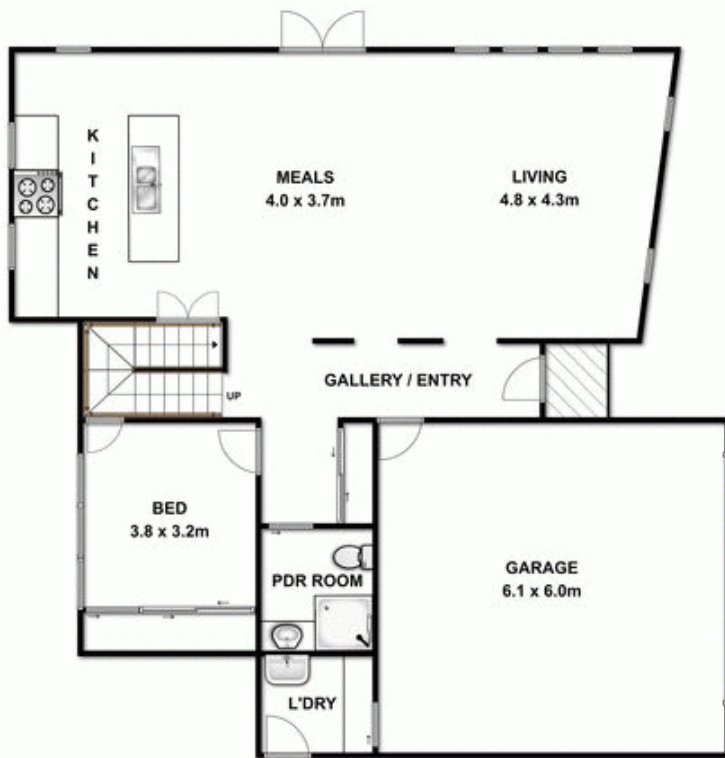
2 2

**Price** : \$ 420,000

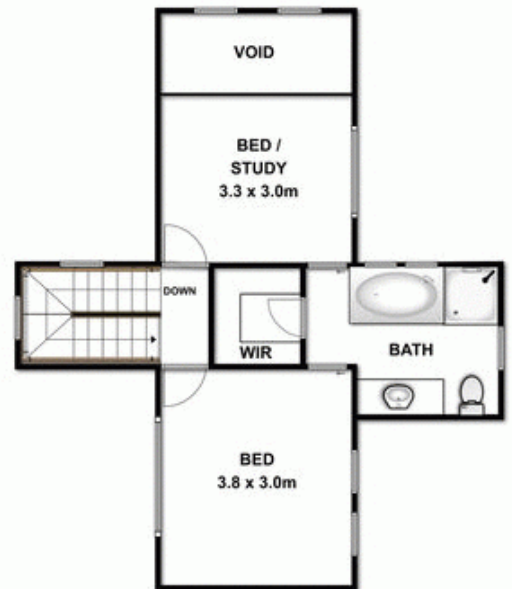
**View** : <https://www.bellarineproperty.com.au/1503331>



**Christian Bartley**  
03 5254 3100



**GROUND LEVEL**



**UPPER LEVEL**



Whilst every attempt has been made to ensure the accuracy of the floor plan contained here, measurements of doors, windows, rooms and any other items are approximate and no responsibility is taken for any error, omission, or mis-statement. This plan is for illustrative purposes only and should be used as such by any prospective purchaser. The services, systems and appliances shown have not been tested and no guarantee as to their operability or efficiency can be given.