



## 55 Fraser Crescent OCEAN GROVE VIC

3 2 2

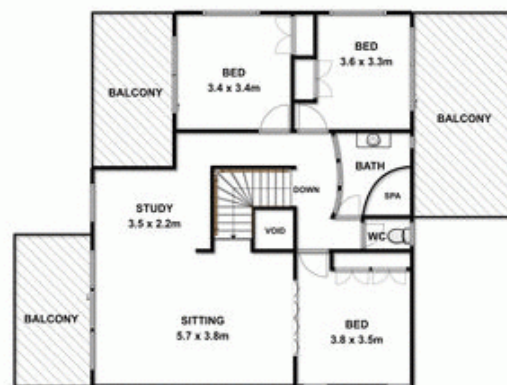
This grand family home sits on a spacious corner allotment amongst manicured, low maintenance gardens and lawn. Its solid brick, two-story facade conveys a subtle opulence complimented by private balconies to the upper level.

Indoors is wonderfully rustic and textural with exposed beams and brick work, raked ceilings, timber panelling and slate floors. The expansive open planned nature of the downstairs living environment carries these strong design features well. Downstairs is a well-lit and versatile space, dedicated to living, dining, relaxing and entertaining. The roomy floor plan flows around a central stair case. The kitchen offers electric cooking technology including St George wall oven and grill, bench top hobs and a copper Robinhood range hood. Ample work surfaces, a double sink and large pantry are optimal for family catering. Adjoining is a formal dining space with Rinnai gas heater and picturesque bay window providing garden views. In the other direction, the kitchen flows through glass doors to the undercover alfresco space, or to the informal living zone with cosy gas log fire. Step up to another spacious living zone with solid built-in bar and dual glass sliders accessing the alfresco. Conjuring thoughts of summer parties, birthdays and family Christmas gatherings, this bar area

**Price** : \$ 0  
**Land Size** : 671 sqm  
**View** : <https://www.bellarineproperty.com.au/15033>  
 27



**Dan Halsey**  
 03 5254 3100



LEVEL 1



GROUND



Whilst every attempt has been made to ensure the accuracy of the floor plan contained here, measurements of doors, windows, rooms and any other items are approximate and no responsibility is taken for any errors, omission, or mis-statement. This plan is for illustrative purposes only and should be used as such by any prospective purchaser. The services, systems and appliances shown have not been tested and no guarantee as to their operability or efficiency can be given.