

### 1/17 Highview Court OCEAN GROVE VIC

3 2 2

In a privileged location, this brand new, high quality townhouse has been designed to capitalise on glorious panoramic views starting from Queenscliff, past the Point Lonsdale Lighthouse all the way to the rugged beauty of the Barwon Heads Bluff.

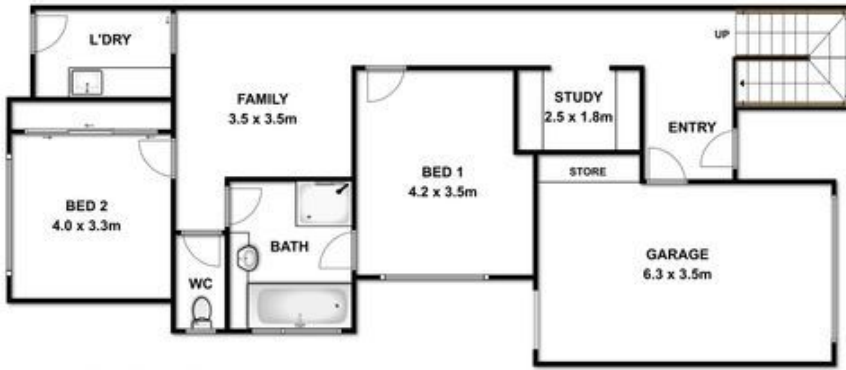
**Price** : \$ 730,000

**View** : <https://www.bellarineproperty.com.au/1503280>

- Located in a sought-after prestige class court
- Designed with flair by PK Studio Architects
- At 20.2 squares (excl. Garage), it is sizable for either permanent or holiday living
- Lower Level houses two double-sized bedrooms, a separate living zone and study
- Sleek modern bathroom with free standing bath
- Designer laundry for neat living
- Upstairs features the main hub of the home with open planned living and kitchen
- Spacious living opens through large glass sliding doors to the elevated deck
- Chic galley kitchen with Euro stainless steel appliances and stone bench tops
- The living is surrounded by gorgeous panorama of the ocean
- Magnificent light filled timber staircase features



**Christian Bartley**  
**03 5254 3100**



**GROUND**



**LEVEL 1**



Whilst every attempt has been made to ensure the accuracy of the floor plan contained here, measurements of doors, windows, rooms and any other items are approximate and no responsibility is taken for any error, omission, or mis-statement. This plan is for illustrative purposes only and should be used as such by any prospective purchaser. The services, systems and appliances shown have not been tested and no guarantee as to their operability or efficiency can be given.