



17 Bellevue Drive OCEAN GROVE VIC

5 3 2

This magnificent English country house, with over an acre of manicured grounds, may well be the pride of The Bellevue Estate. Offering the ultimate in entertaining, elaborate indoor/outdoor living zones will impress the most ostentatious of hosts and provide a private, spacious sanctuary for a family to play and grow.

The majestic facade is a pastiche of the Tudorbethan-style, featuring a steep gabled slate roof and jettied first floor dormer windows above a pillared front porch with lead-lit entry. In contrast, the interior is a statement of 20th century class, boasting a well-lit open floor plan, accessorized with contemporary, quality fittings and fixtures.

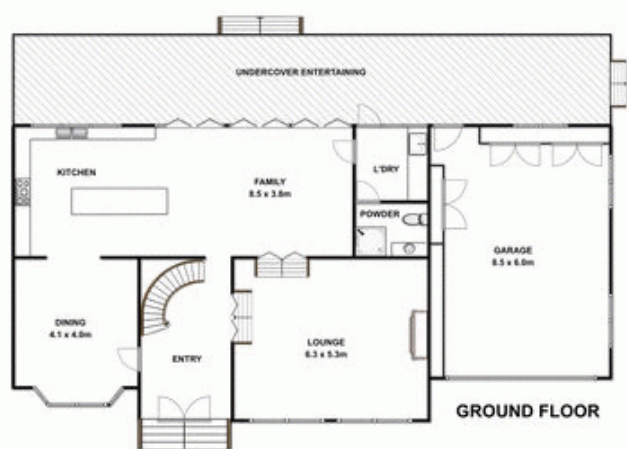
On entry, vision through the home is overwhelming. The view transects the entry hall and casual living zone with adjoining deck, incorporating the in-ground pool and spa house, ending in the vast backyard with a backdrop of beautiful yellow gums.

The brand new kitchen, with contemporary provincial theme, is centred between the living and dining spaces offering the chef a social existence and the best in culinary technology. Boasting Caesarstone benches, soft-closing draws and cupboards, Smeg oven and ceramic cooktop, Bosch dishwasher and servery window to the deck, hosting

Price : \$ 1,030,000
Building Size : 5 Sqrs
Land Size : 5000 sqm
View : <https://www.bellarineproperty.com.au/1503257>



Dan Halsey
03 5254 3100



Whilst every attempt has been made to ensure the accuracy of the floor plan contained here, measurements of doors, windows, rooms and any other items are approximate and no responsibility is taken for any error, omission, or mis-statement. This plan is for illustrative purposes only and should be used as such by any prospective purchaser. The services, systems and appliances shown have not been tested and no guarantee as to their operability or efficiency can be given.