



2A Bell Street BARWON HEADS VIC

4 3 2

They sure don't make them like they used to! Don't miss the perfect renovation, in the perfect sea-change location. This enchanting 1960's brick home has been cleverly renovated to offer a flexible, up to four bedroom, two bathroom floor-plan graced with every glorious period detail....and streamlined contemporary design.

Set on an enormous 730m2 corner block with dual access to the prized Ewing Blythe Drive and Bell Street, this beachside home is only a short stroll to the wonderful river, beaches, shops and restaurants that Barwon Heads is renowned for.

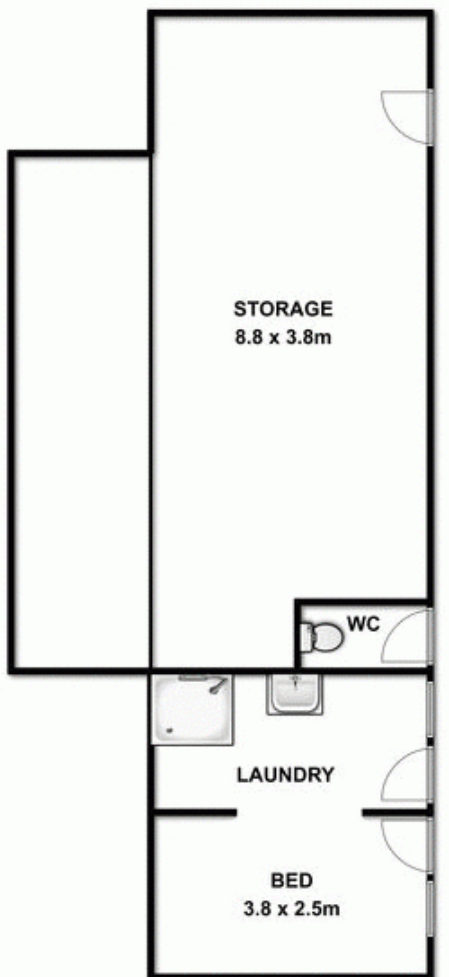
The kitchen is set overlooking the rear garden and has a sweet '60s retro feel in a fresh white and aqua palette, rounded, laminex countertops and upright oven. A wide hutch opens to the adjacent dining room, so, tie your frilly apron strings, set up the fondue and throw yourself a cocktail party! Or just enjoy it in 2012 style instead!

Retro mashed with modern functionality wins again in the two bathrooms with charming upright sinks and luxurious colours. There are three double-sized bedrooms, the main

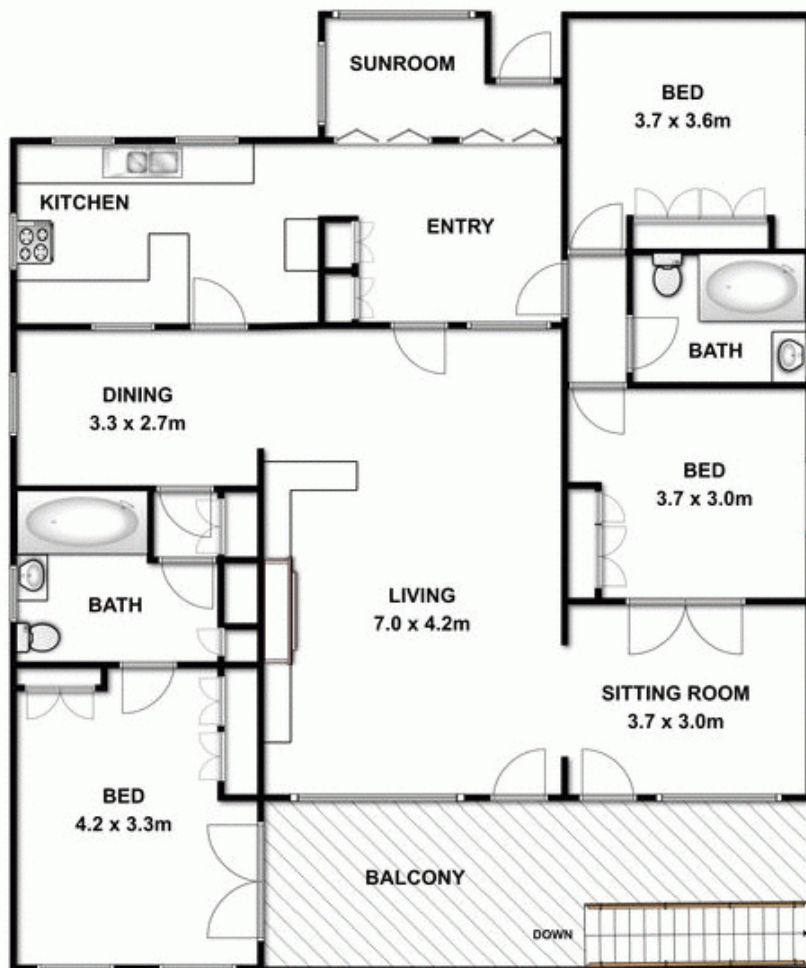
Price : \$ 1,200,000
Building Size : 2 Sqrs
Land Size : 730 sqm
View : <https://www.bellarineproperty.com.au/1503225>



Christian Bartley
03 5254 3100



GROUND LEVEL



UPPER LEVEL



Whilst every attempt has been made to ensure the accuracy of the floor plan contained here, measurements of doors, windows, rooms and any other items are approximate and no responsibility is taken for any error, omission, or mis-statement. This plan is for illustrative purposes only and should be used as such by any prospective purchaser. The services, systems and appliances shown have not been tested and no guarantee as to their operability or efficiency can be given.

