



## 2/22 Curzon Drive OCEAN GROVE VIC

3 2 1

Privately placed in the popular Kingston Estate, the quality and style are obvious. Secluded and stylishly compact, the design uses space brilliantly creating separate social and sleeping zones.

A sense of continuity comes with the use brushed aluminium windows, polished chrome fittings, down lights and mocha toned tiles and carpet throughout. The all-natural palette results in a relaxing coastal aesthetic.

The facade is clean-lined and welcoming featuring weatherboard cladding and rendered brick, complimented by a high gable to the double garage with classy timber Control-A-Door. The chic entry deck, with chunky timber pillar, sets the tone for the neutral theme indoors.

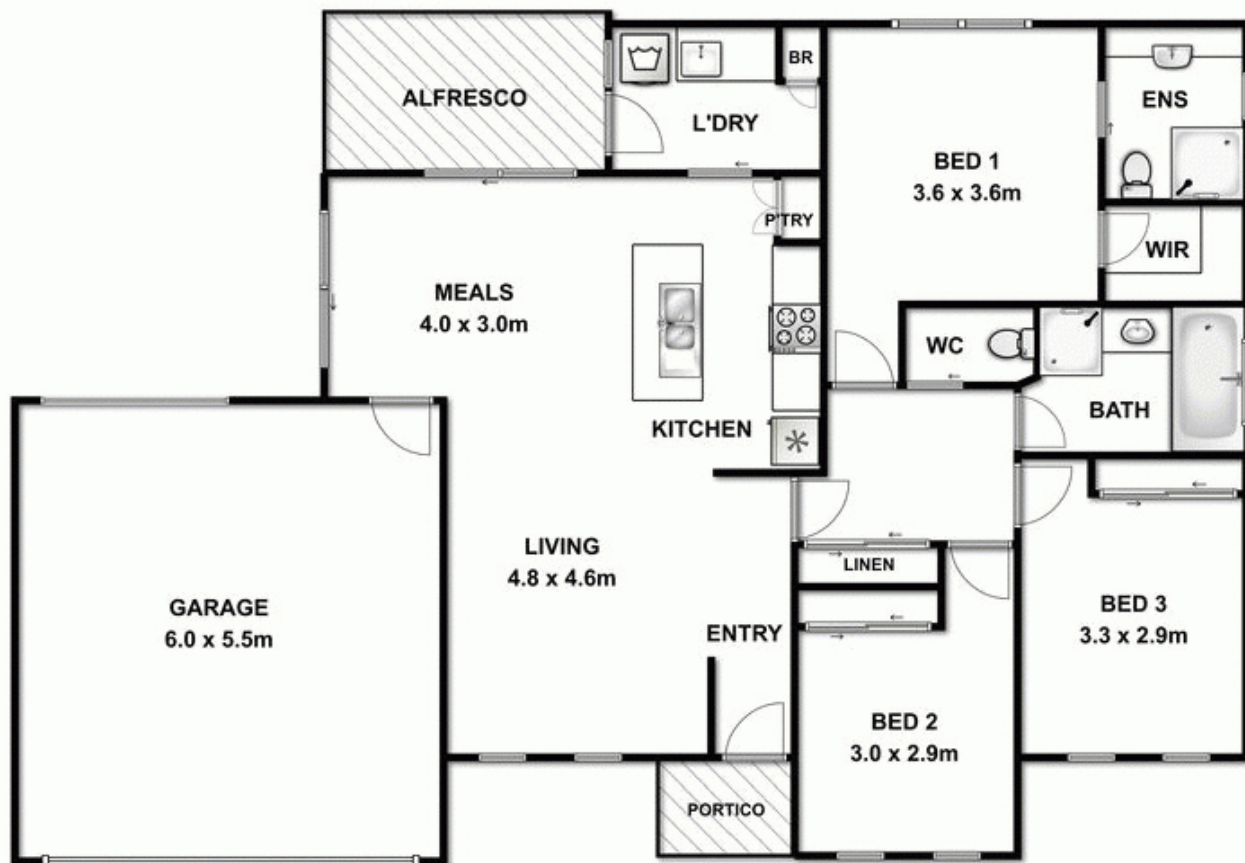
In the social zone, living is light and airy with twin vertical floor-to-ceiling windows reflecting light off polished hardwood floors. The well-considered floor plan allows; unrestricted movement throughout the living/dining/kitchen, ample sunlight from multiple directions, and functionality including inset shelving with down light and kitchen island incorporating breakfast bar, sinks and storage. Cooks will love the well-dressed kitchen featuring Caesarstone, stainless steel Westinghouse oven, range and gas cooktop, Euroart dishwasher and sharp white cabinetry including

**Price** : \$ 395,000

**View** : <https://www.bellarineproperty.com.au/1503205>



**Dan Halsey**  
**03 5254 3100**



Whilst every attempt has been made to ensure the accuracy of the floor plan contained here, measurements of doors, windows, rooms and any other items are approximate and no responsibility is taken for any errors, omission, or mis-statement. This plan is for illustrative purposes only and should be used as such by any prospective purchaser. The services, systems and appliances shown have not been tested and no guarantee as to their operability or efficiency can be given.