



60 Newbay Close BARWON HEADS VIC

4 🏠 2 🚗 2 🚗

If you like your home to be welcoming and full of period-style character, but also love your modern comforts (who doesn't!), then this four bedroom family charmer is just perfect!

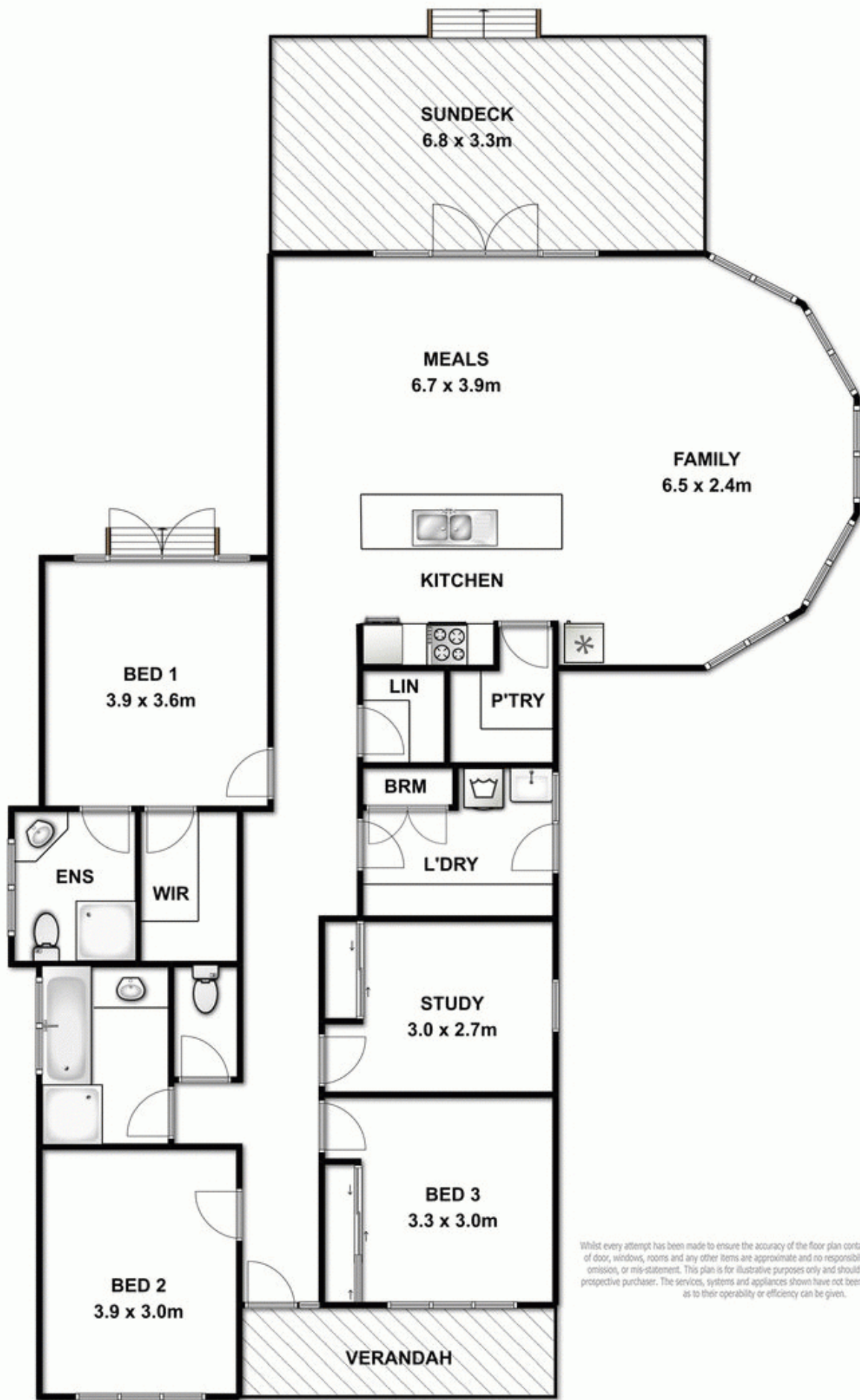
Price : \$ 575,000
Land Size : 646 sqm
View : <https://www.bellarineproperty.com.au/1503186>

This quaint home with an Edwardian cottage style facade is located serenely at the quiet end of Barwon Heads, just moments from the meandering Barwon River. A cosy front verandah and entry into a wide, central hallway with high ceilings may be a classic period home's style, but the degree of light, the amazing openness and the engaging fresh decor is definitely not. Floorboards gleam and the flowing floor-plan invites you all the way down to a light-filled and lavishly-sized family living, facing northwards to a sun-bathed deck and garden. It's old time allure with a modern edge!



Christian Bartley
03 5254 3100

Three bedrooms are located at the front of the home, one would make an ideal sitting room or study with single-hung timber windows overlooking the neat front yard. The master bedroom is secluded at the rear with glossy en-suite, a large walk-in-robe and direct access to the back garden. The main bathroom is gorgeous in striking black and white



Whilst every attempt has been made to ensure the accuracy of the floor plan contained here, measurements of door, windows, rooms and any other items are approximate and no responsibility is taken for any error, omission, or mis-statement. This plan is for illustrative purposes only and should be used as such by any prospective purchaser. The services, systems and appliances shown have not been tested and no guarantee as to their operability or efficiency can be given.