



5/12-14 Seabank Drive BARWON HEADS VIC

3 2 1

The Seabank Estate is located so well. It's exclusive and private with no through traffic, but still close to the heart of Barwon Heads. The row of prominent, designer-style townhouses at the heart of the Seabank Estate are also located well. Only two years old, this striking townhouse is set centrally in the row, with sweeping parkland views from its two living areas.

A relaxing lounge at the front of the home celebrates the view with a wonderful, wide open outlook through tall glass sliding doors. A gas log fire will keep you cosy here in winter and in summer you can pop on your bathers, step onto your private deck, through your front gate into the park and stroll down to the beach!

Leading from the lounge over gleaming polished floor boards you enter the fabulous kitchen with walk-in-pantry, Caesarstone bench-tops, large oven and reverse-cycle air-conditioning. Sharing a meal with friends will be a treat with an adjacent dining area opening onto a sundrenched rear timber deck in the courtyard garden.

There are three spacious bedrooms, two upstairs with built-in robes and the master suite is secluded at the rear downstairs. It will be a truly delightful retreat for any new owners with a window alcove providing a unique touch and

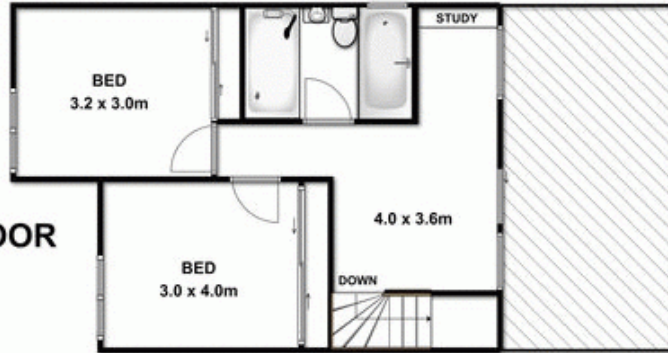
Price : \$ 640,000
Land Size : 235 sqm
View : <https://www.bellarineproperty.com.au/1503171>



Christian Bartley
03 5254 3100

Whilst every attempt has been made to ensure the accuracy of the floor plan contained here, measurements of door, windows, rooms and any other items are approximate and no responsibility is taken for any error, omission, or mis-statement. This plan is for illustrative purposes only and should be used as such by any prospective purchaser. The services, systems and appliances shown have not been tested and no guarantee as to their operability or efficiency can be given.

FIRST FLOOR



GROUND FLOOR

