



2/3 River Parade BARWON HEADS VIC

3 2 2

The Barwon River meanders and flows through time and space down to the delightful village of Barwon Heads. Sitting metres from its banks, past majestic gum trees and secluded behind a native garden is this impressive modern home. Enlarged walls of glass flank its front, allowing you to admire the soothing views of the river flowing past in your very own space and time.

Sleek and contemporary throughout, this 'as new' home is built to blend in with the lovely surrounds of this riverside locale and to celebrate the magnificent views, but is also designed with functional, comfortable and even, dare we say, luxurious family living in mind.

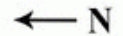
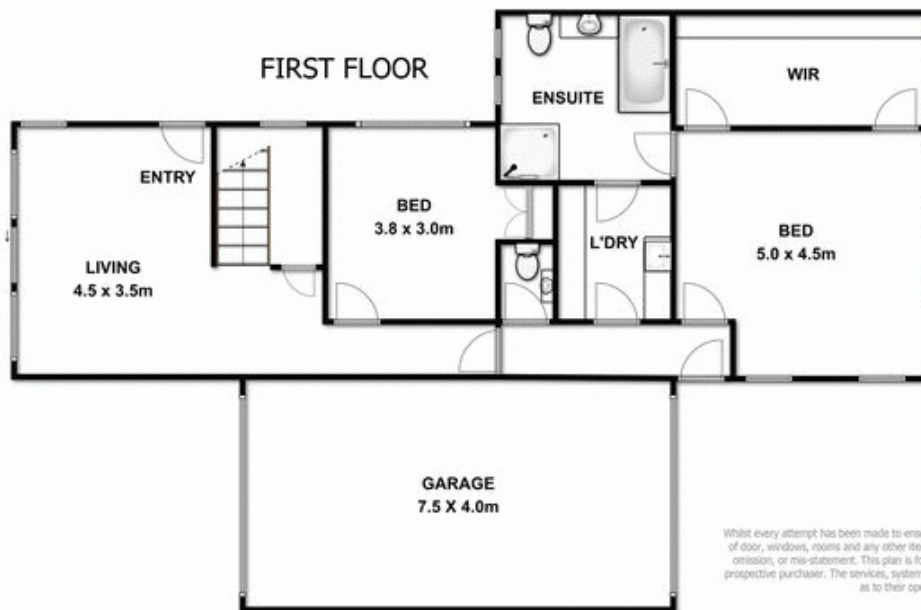
Downstairs features a spacious living area with private, north facing views onto the low maintenance native front garden. A wide hallway leads towards the simply enormous main bedroom, an exceptional space with large glass doors opening onto the pretty rear garden.

Adjoining is a stylish, full size en-suite with bath and a huge walk-in-robe. There are two more spacious bedrooms, one downstairs with built-in-robos and the other upstairs with a large walk-in-robe and a swish en-suite. Downstairs there

Price : \$ 780,000
Building Size : 22 Sqrs
Land Size : 337 sqm
View : <https://www.bellarineproperty.com.au/1503166>



Christian Bartley
03 5254 3100



Whilst every attempt has been made to ensure the accuracy of the floor plan contained here, measurements of door, windows, rooms and any other items are approximate and no responsibility is taken for any error, omission, or mis-statement. This plan is for illustrative purposes only and should be used as such by any prospective purchaser. The services, systems and appliances shown have not been tested and no guarantee as to their operability or efficiency can be given.