



4/22-24 Grove Road BARWON HEADS VIC

3 **2** **2**

Put simply, this is an extraordinarily beautiful townhouse located a short 300 metre stroll from the heart of Barwon Heads. Its design by award winning InArc Architects is dramatic, spacious and functional giving a feeling of first-rate contemporary style. Quiet, private and in synch with its coastal locale, it presents an exceptional opportunity to secure yourself a dream residence in Barwon Heads.

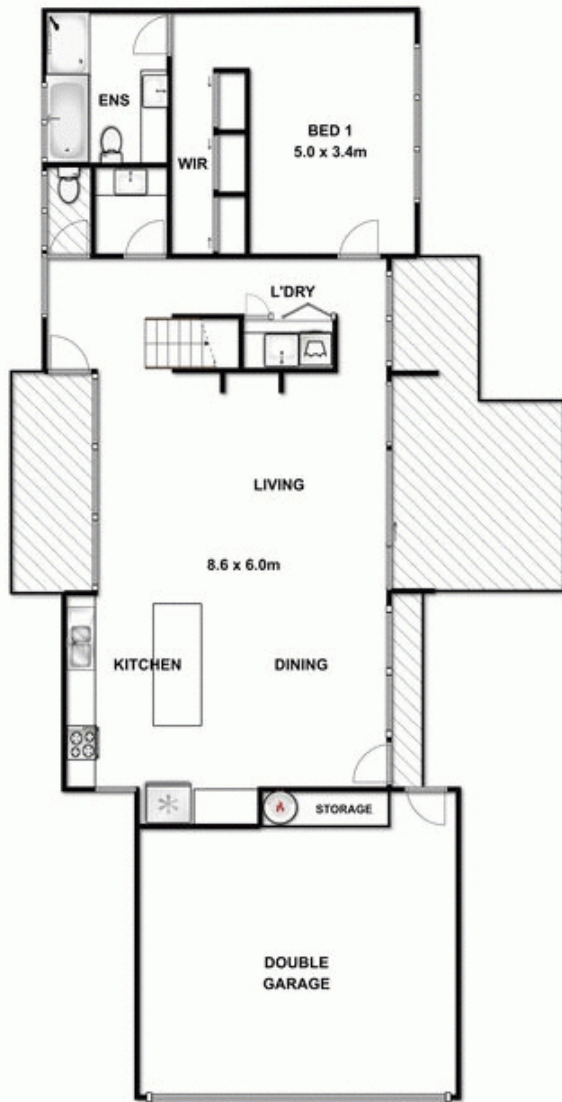
Spread over two generous stories and approximately 26 squares, this is a townhouse of grand proportions. Entry is from a winding pebbled pathway through established landscaped grounds. The airy main living space's 'wow' factor derives from north facing walls of glass which highlight the lush private courtyard. Parquetry flooring with Caesarstone bench-tops and quality appliances compliment the open-plan design, inclusive of formal dining, lounge and splendid kitchen. Adjacent, a swish powder room is ideal for guests, and a discrete European laundry operates from a hidden hallway.

The main bedroom has its own glass wall of windows accessing garden views. It has a large walk-in-robe and full

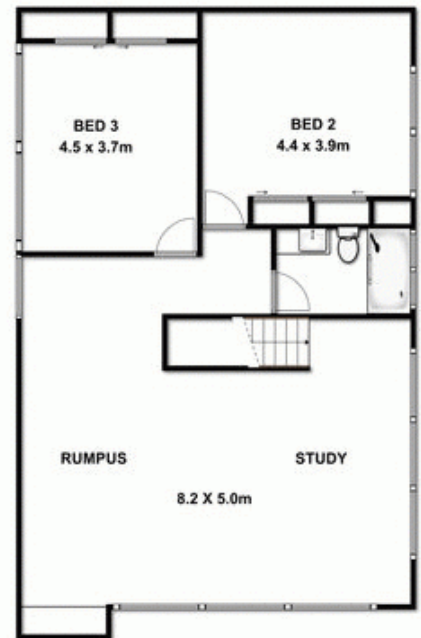
Price : \$ 900,000
Building Size : 25 Sqrs
Land Size : 328 sqm
View : <https://www.bellarineproperty.com.au/1503140>



Christian Bartley
03 5254 3100



GROUND FLOOR



FIRST FLOOR

Whilst every attempt has been made to ensure the accuracy of the floor plan contained here, measurements of door, windows, rooms and any other items are approximate and no responsibility is taken for any error, omission, or mis-statement. This plan is for illustrative purposes only and should be used as such by any prospective purchaser. The services, systems and appliances shown have not been tested and no guarantee as to their operability or efficiency can be given.