



185 Rhinds Road WALLINGTON VIC

3 2 5

Relaxed living doesn't come any better than in this spectacular replica Federation home, where country comforts and coastal convenience combine effortlessly to create a truly idyllic family environment. Set upon 3.5 glorious acres in the tranquil heart of the Bellarine Peninsula, this sensational property provides pastoral ambience just moments away from the region's beautiful beaches and bustling towns.

Beyond the expansive front lawn, exquisite rose gardens, neat hedges and full-width verandah, the immaculately presented home boasts genuinely spacious dimensions throughout, with 3 carpeted bedrooms and a large study/home office, all with lovely garden outlooks. Lustrous hardwood floors flow from the wide entry hall with fretwork arches, through to a vast family living area with dining alcove, served by a spotless kitchen with timber benches and gas appliances.

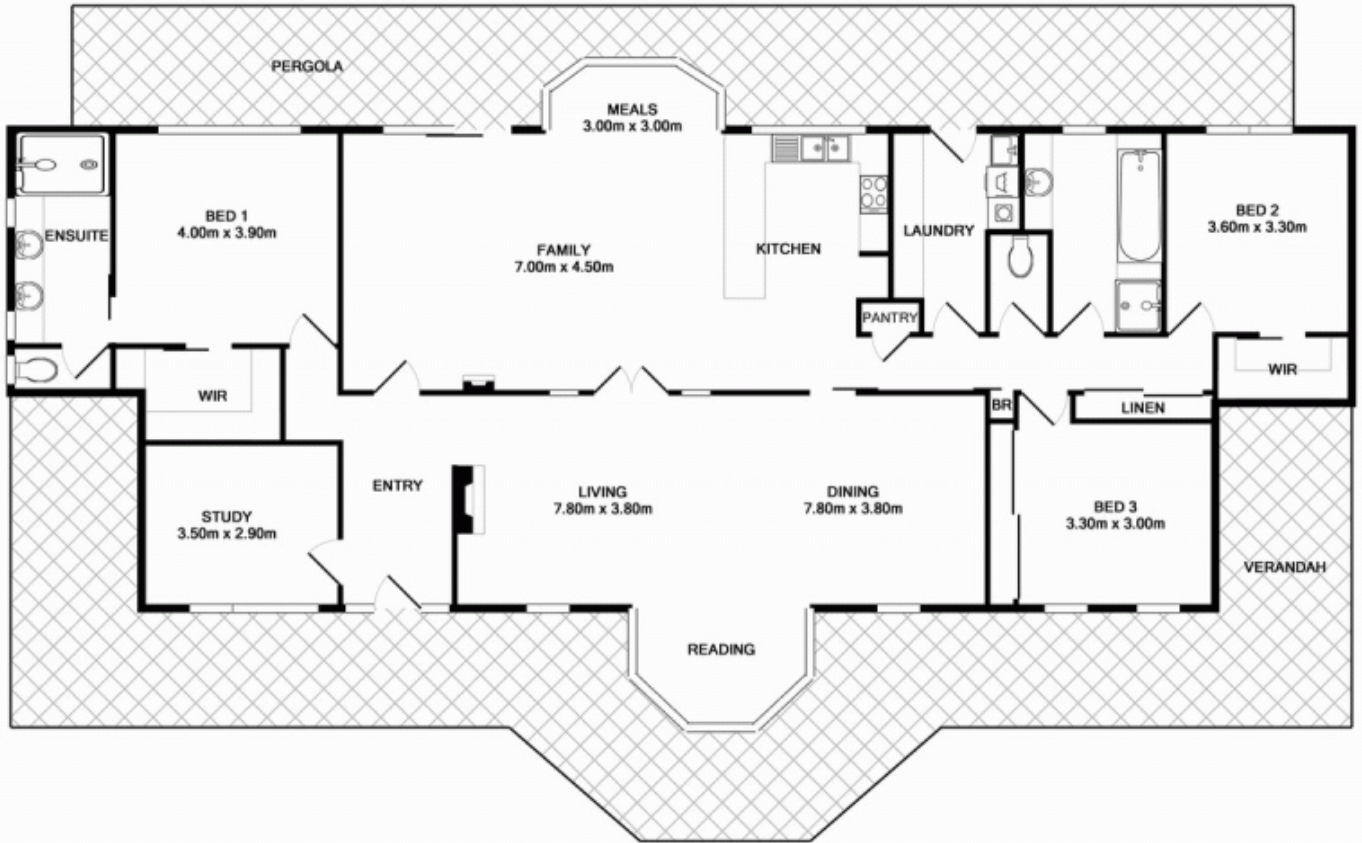
A sumptuous, carpeted formal living/dining room includes an open fireplace and bay window; the main bedroom zoned to the front features a walk-in robe and stunning ensuite with twin timber vanity; while two further bedrooms with robes share a pristine central bathroom.

A brilliant paved pergola area overlooks the magnificent

Price : \$ 800,000
Building Size : 3 Sqrs
Land Size : 14163.9974 sqm
View : <https://www.bellarineproperty.com.au/1503137>



Dan Halsey
03 5254 3100



Whilst every attempt has been made to ensure the accuracy of the floor plan contained here, measurements of doors, windows, rooms and any other items are approximate and no responsibility is taken for any error, omission, or mis-statement. This plan is for illustrative purposes only and should be used as such by any prospective purchaser. The services, systems and appliances shown have not been tested and no guarantee as to their operability or efficiency can be given.