



650 Wallington Road WALLINGTON VIC

4 2 6

'Under the trees, by the water'

IMAGINE living in a beautiful house with gorgeous views on acres of rolling green land and being only minutes from the beaches, bay, lake, vineyards, history, restaurants and shopping of the Bellarine Peninsula.

Think about having ample space, privacy, home-grown vegetables and fruit from your own orchard. Picture yourself enjoying the sights and sounds of nature from your modern, stylish home. Then imagine watching your kids - or you - riding your horse in the morning and surfing a wave in the afternoon.

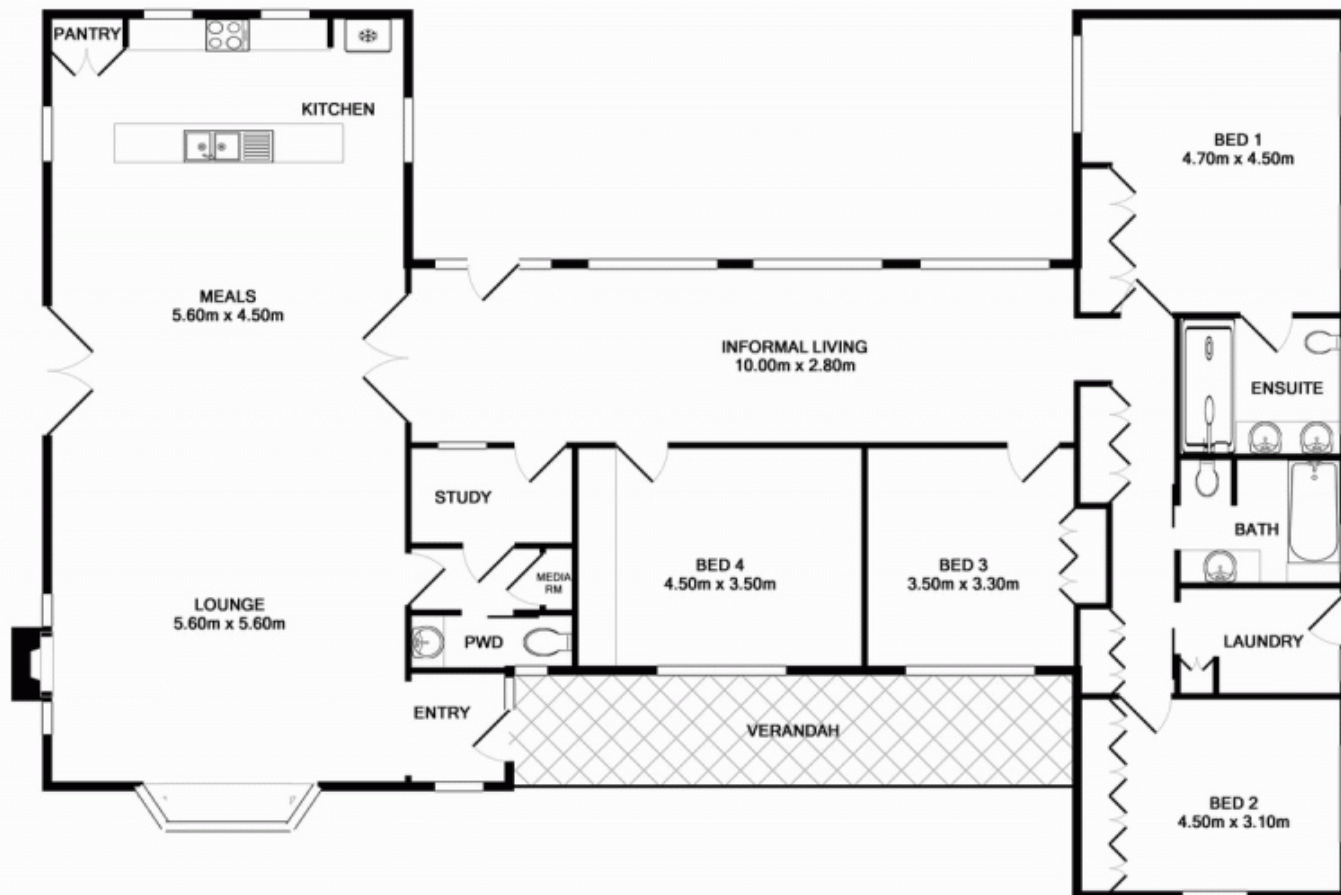
Offering the best of country living in the centre of the peninsula, this charming, spacious, recently renovated, four bedroom eco-friendly rural property sits atop five acres of immaculately kept mixed-use paddocks in a quiet bush setting. This is an incredible opportunity to realise your dream lifestyle.

The home is solid and characterful with each room offering stunning views, the best through large bay windows in the

Price : \$ 845,000
Land Size : 20235 sqm
View : <https://www.bellarineproperty.com.au/1503135>



Dan Halsey
03 5254 3100



Whilst every attempt has been made to ensure the accuracy of the floor plan contained here, measurements of doors, windows, rooms and any other items are approximate and no responsibility is taken for any error, omission, or mis-statement. This plan is for illustrative purposes only and should be used as such by any prospective purchaser. The services, systems and appliances shown have not been tested and no guarantee as to their operability or efficiency can be given.