



4 Knowle Court OCEAN GROVE VIC

3 2 3

On a generous allotment close to beaches, shops and leisure activities, this classically styled family home offers coastal living with a touch of class. Boasting tremendous street appeal and multiple living and entertaining options, this character-laden home will please the most fastidious purchaser.

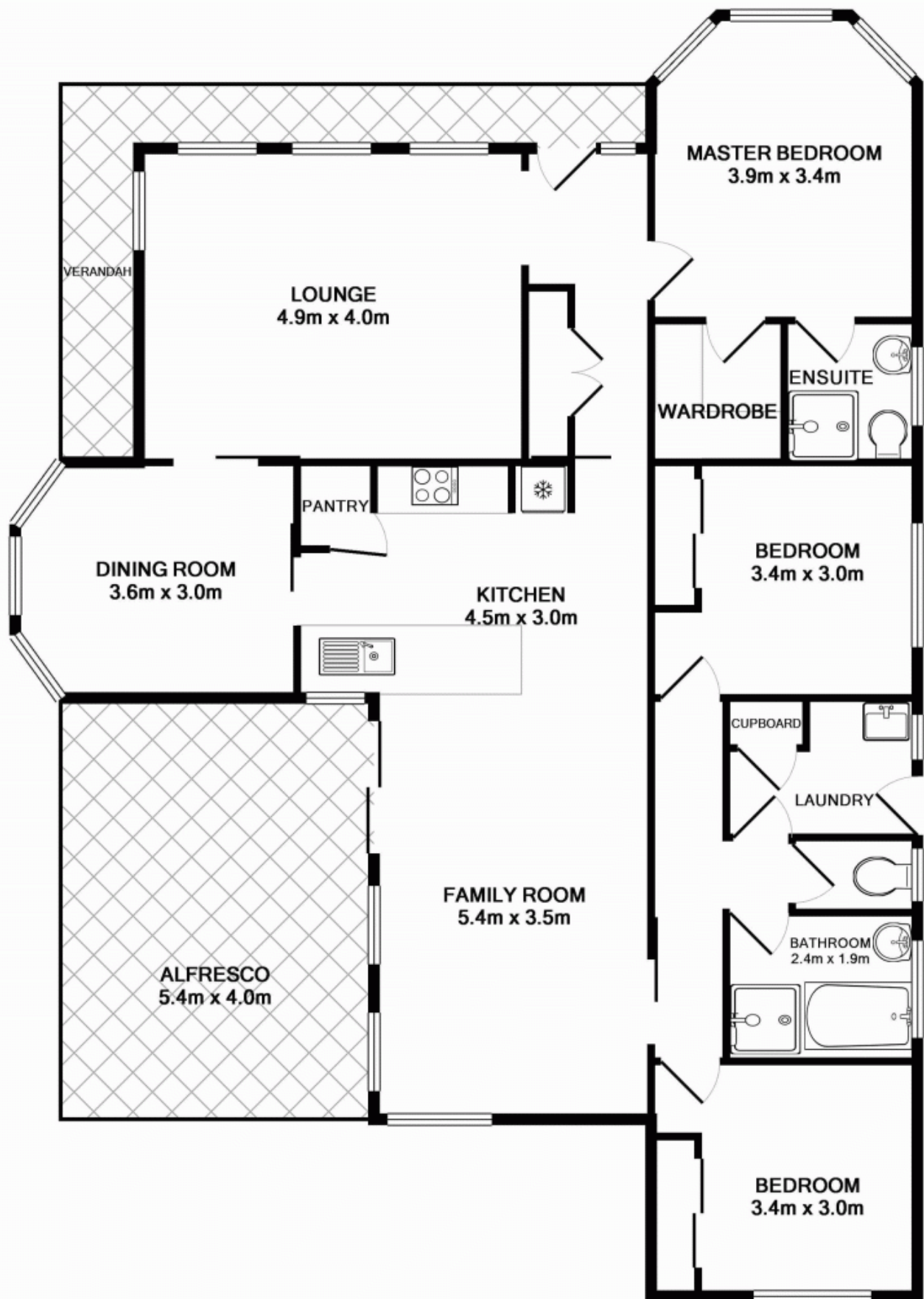
Beyond the return driveway and L-shaped front verandah, you'll find a parquetty-tiled hallway leading past a spacious living room with gas heater and adjoining formal dining room with bay window; a main bedroom at the front with walk-in robe and ensuite; and a large air-conditioned family living area served by a superb kitchen with breakfast bar. Sliding doors open to the lovely rear yard and gardens with a 6 X 9 metre shed and pergola area.

Also featuring two further bedrooms with robes, a family bathroom with separate toilet, laundry, and a 3 car carport with room for multiple vehicles, this exceptional home exudes quality and comfort. Arrange an inspection today!

Price : \$ 420,000
Land Size : 746 sqm
View : <https://www.bellarineproperty.com.au/15031>



Christian Bartley
03 5254 3100



TOTAL APPROX. FLOOR AREA 124.1 SQ.M. (1336 SQ.FT.)

Whilst every attempt has been made to ensure the accuracy of the floor plan contained here, measurements of doors, windows, rooms and any other items are approximate and no responsibility is taken for any error, omission, or mis-statement. This plan is for illustrative purposes only and should be used as such by any prospective purchaser.