






**5/110 Tomara Drive BARWON HEADS VIC**

2  2  1 

Overlooking the renowned courses of the Thirteenth Beach Golf Links, this apartment has style. Offered fully furnished and currently part of the professionally managed on-course accommodation, it is perfect for investors or for those who enjoy golf.

Architect designed, the Evian apartments have been built with lifestyle in mind. Their soaring ceilings and large windows let in loads of light and make the most of the stunning surrounds, ensuring it is a fantastic place to be. Securely surrounded by the golf course and all its facilities, and with a private walking track to the beach, the lifestyle is indeed enviable.

Apartment 5 is on two levels, allowing panoramic views over both golf courses. The open plan kitchen, lounge and dining room has a wall of windows opening onto a large north facing deck, perfect for entertaining and observing the action on the 18th fairway. A split system keeps the living area comfortable throughout the seasons.

Two bedrooms are both large with built-in robes, and en suites, one has a balcony facing South over the beach

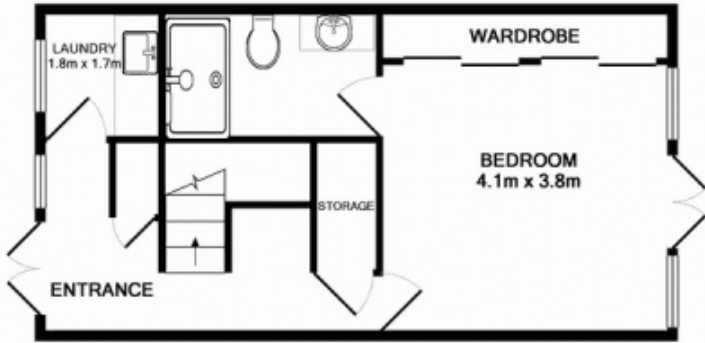
**Price** : \$ 0  
**Building Size** : 12 Sqrs  
**View** : <https://www.bellarineproperty.com.au/1503117>



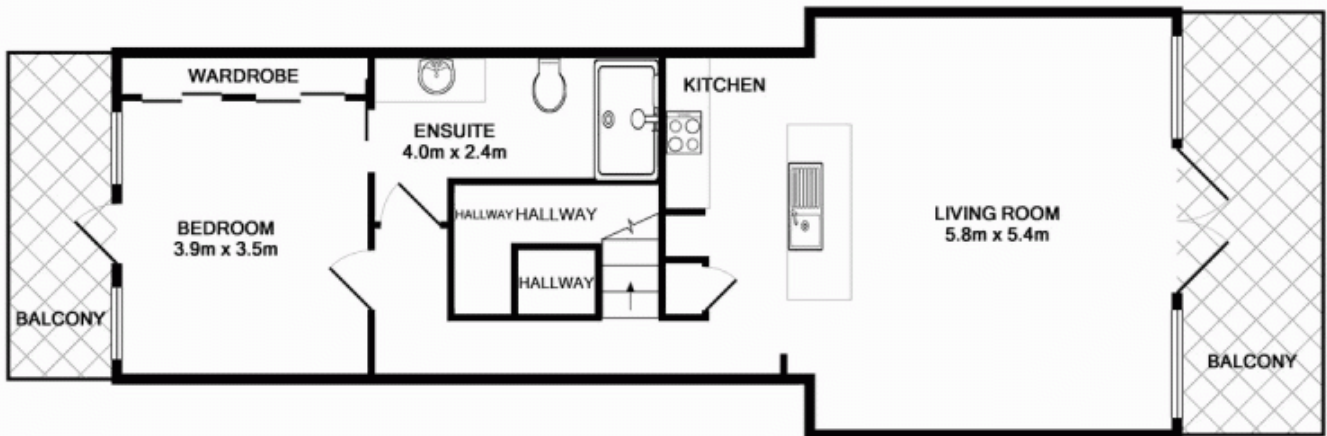
**Christian Bartley**  
**03 5254 3100**

TOTAL APPROX. FLOOR AREA 112.3 SQ.M. (1209 SQ.FT.)

Whilst every attempt has been made to ensure the accuracy of the floor plan contained here, measurements of doors, windows, rooms and any other items are approximate and no responsibility is taken for any error, omission, or mis-statement. This plan is for illustrative purposes only and should be used as such by any prospective purchaser.



GROUND FLOOR  
APPROX. FLOOR  
AREA 39.4 SQ.M.  
(424 SQ.FT.)



1ST FLOOR  
APPROX. FLOOR  
AREA 72.9 SQ.M.  
(784 SQ.FT.)