



BARWON HEADS

4 2 3

In a superb location providing easy access to beaches, shops and the golf course, this sensational 4-bedroom contemporary home offers comfort, style and a touch of class for the modern family. With a brilliant floorplan, stunning gardens and truly spacious dimensions, this is luxury living with coastal convenience.

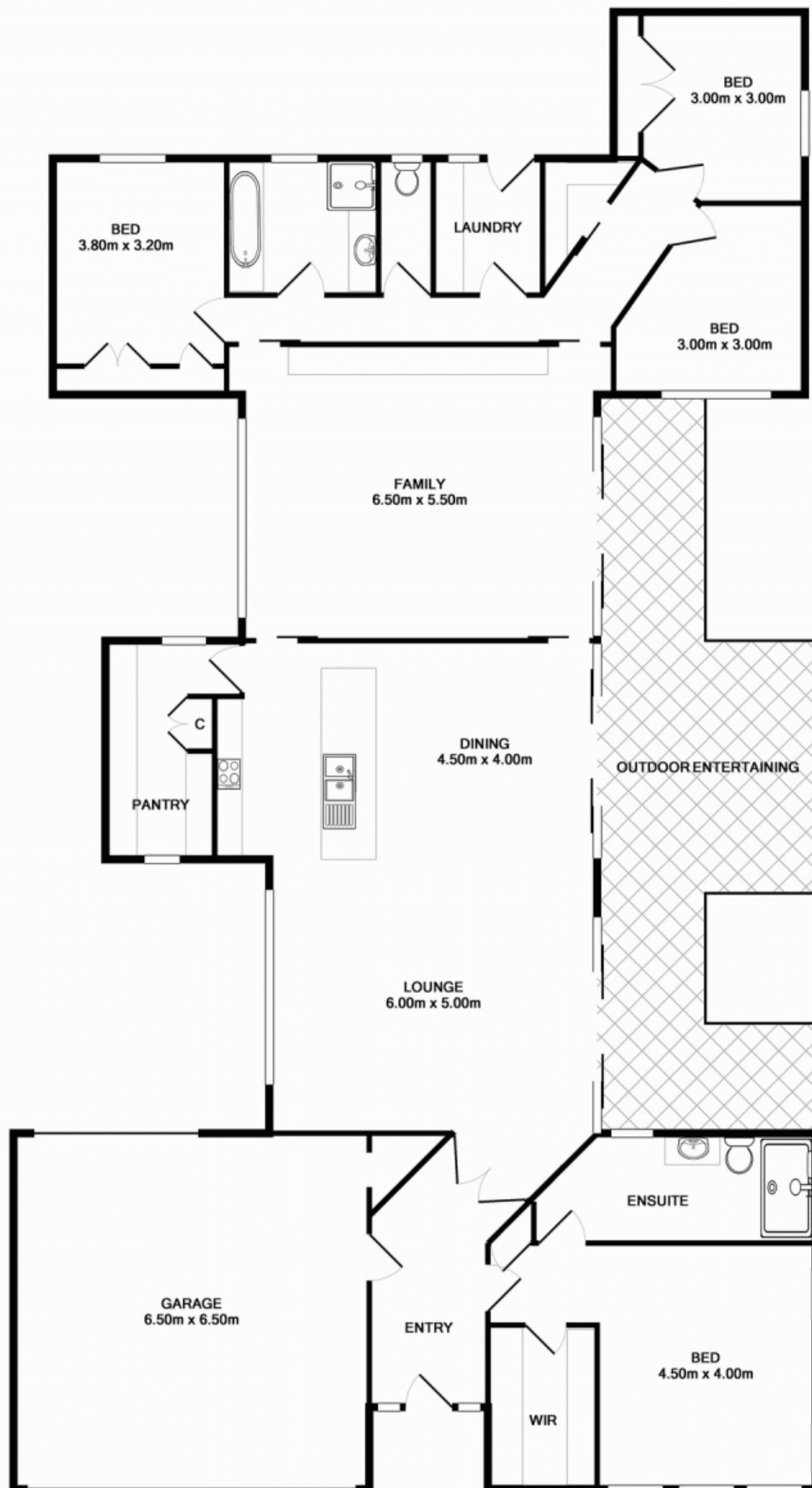
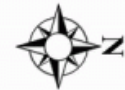
Behind a private front fence, the tiled entrance hall with soaring ceiling leads past a carpeted large main bedroom with walk-in robe and a striking ensuite. Through double doors to an enormous open-plan family/dining/kitchen area with doors to a north-facing alfresco area and landscaped gardens. The kitchen features CaesarStone bench tops, stainless steel appliances and a huge butler's pantry, while the living area looks out onto a superb water feature wall.

Beyond a carpeted second living area are three further bedrooms with robes, a sparkling bathroom with separate toilet, and a laundry leading to a lovely rear courtyard. With ducted heating and cooling, split-system air-conditioner, ducted vacuum, ceiling fans throughout, a double auto garage with internal and rear access and much more, this fantastic family home is sure to impress.

Price : \$ 785,000
Land Size : 630 sqm
View : <https://www.bellarineproperty.com.au/1503100>



Christian Bartley
03 5254 3100



Whilst every attempt has been made to ensure the accuracy of the floor plan contained here, measurements of doors, windows, rooms and any other items are approximate and no responsibility is taken for any error, omission, or mis-statement. This plan is for illustrative purposes only and should be used as such by any prospective purchaser. The services, systems and appliances shown have not been tested and no guarantee as to their operability or efficiency can be given