



## 51 Thomson Drive BARWON HEADS VIC

5 2 2

Set amongst lush green lawns and gardens and backing onto broad pastoral expanses, this stunning two-storey family home combines superior modern seaside living with the tranquillity of country surroundings. Featuring 5 bedrooms, 2 kitchens and multiple living areas over 52 squares, this supremely spacious home is ideal for the family that loves to entertain.

Constructed with the finest materials and exquisite attention to detail, the ground floor comprises a wide flowing hallway, with a wall of timber sliding doors to a superb north-facing deck and gardens; 3 carpeted bedrooms with expansive robes; a pristine spa bathroom; an L-shaped family kitchen/living/dining area with split-system air conditioner; and a western deck with big workshop.

Upstairs you'll find a vast home office with abundant storage; a full-width entertainer's verandah; a main bedroom with huge walk-in robe and tiled ensuite; powder room; a fifth bedroom with robes; and a living/dining area, served by the stylish main kitchen and opening to a big barbecue deck with rural views. With two 5000ltr water

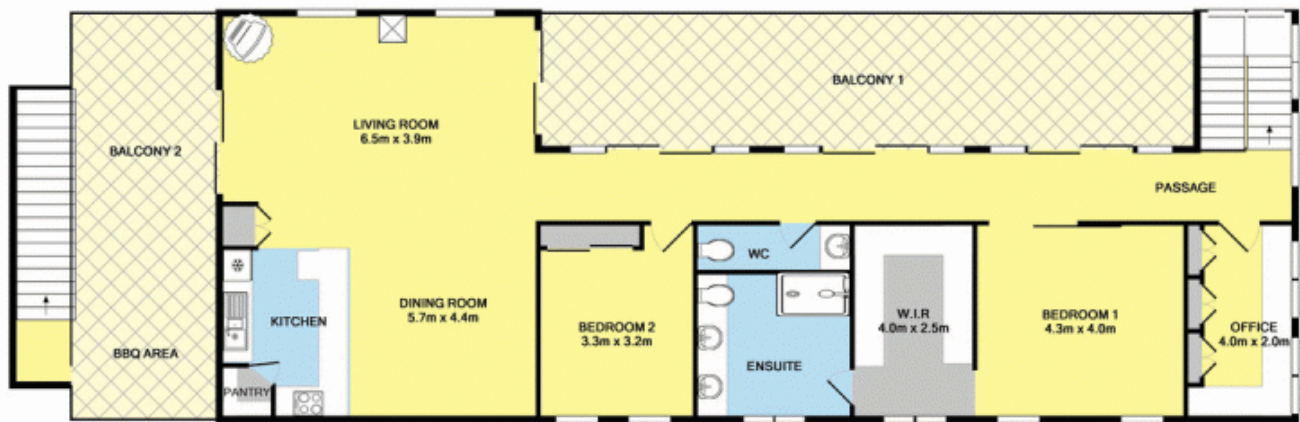
**Price** : \$ 0  
**Land Size** : 632 sqm  
**View** : <https://www.bellarineproperty.com.au/1503071>



**Christian Bartley**  
**03 5254 3100**



GROUND FLOOR



1ST FLOOR

TOTAL APPROX. FLOOR AREA 334.9 SQ.M.

Whilst every attempt has been made to ensure the accuracy of the floor plan contained here, measurements of doors, windows, rooms and any other items are approximate and no responsibility is taken for any error, omission, or mis-statement. This plan is for illustrative purposes only and should be used as such by any prospective purchaser. The services, systems and appliances shown have not been tested and no guarantee as to their operability or efficiency can be given.

